

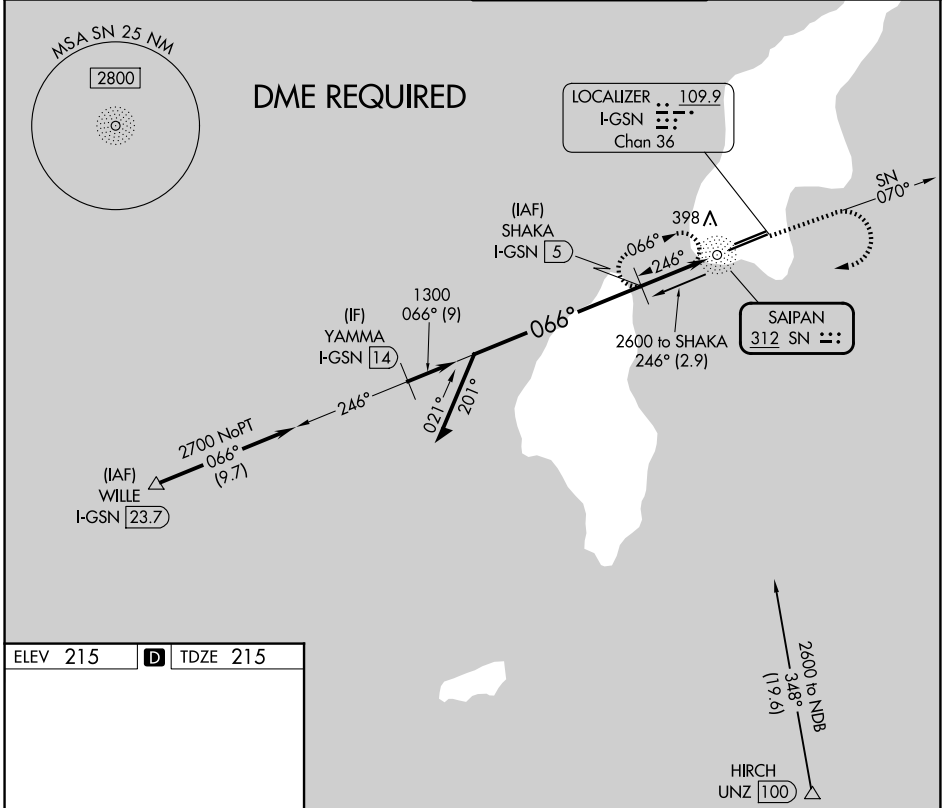
NDB SN <b>312</b>	APP CRS <b>066°</b>	Rwy Ldg TDZE Apt Elev	<b>8010</b> <b>215</b> <b>215</b>
----------------------	------------------------	-----------------------------	---

# NDB Z RWY 7

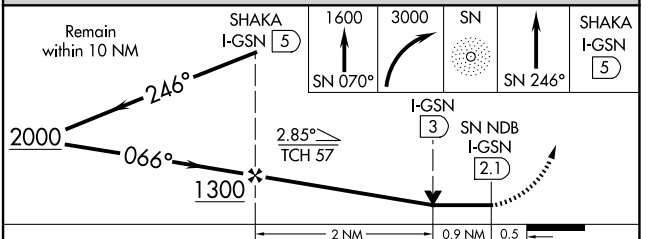
FRANCISCO C ADA/SAIPAN INTL (GSN)(PGSN)

	Circling NA north of Rwy 6-24. DME required.		MISSED APPROACH: Climb to 1600 on SN NDB bearing 070° then climbing right turn to 3000 direct SN NDB then on SN NDB bearing 246° to SHAKA/I-GSN 5 DME and hold.

ATIS <b>127.2</b>	GUAM CERAP <b>118.4 290.5</b>	SAIPAN TOWER <b>125.7 256.9</b>	GND CON <b>121.8</b>
----------------------	----------------------------------	------------------------------------	-------------------------



ELEV 215	<b>D</b>	TDZE 215
REIL Rws 7 and 25 HIRL Rwy 7-25 MIRL Rwy 6-24		



CATEGORY	A	B	C	D
S-7	760-3/4	545 (600-3/4)	760-1 1/8	545 (600-1 1/8)
CIRCLING	760-1	545 (600-1)	760-1 1/8	780-2 565 (600-2)

PAC, 19 MAR 2026 to 14 MAY 2026

PAC, 19 MAR 2026 to 14 MAY 2026