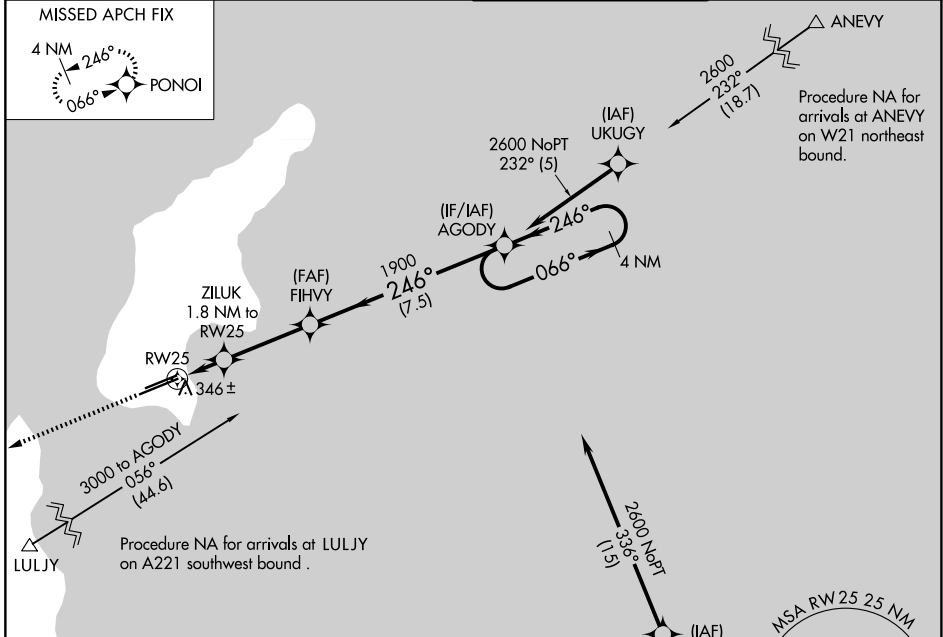


APP CRS	Rwy Ldg	8010
246°	TDZE	210
	Apt Elev	215

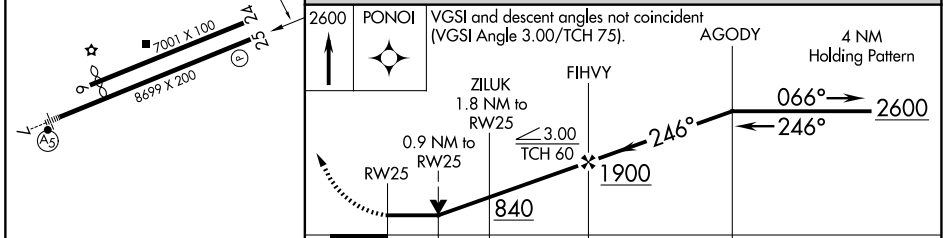
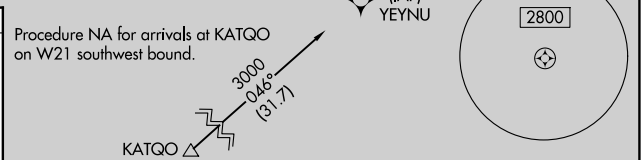
RNAV (GPS) RWY 25

FRANCISCO C ADA/SAIPAN INTL (G5N)(PG5N)

RNP APCH - GPS.		MISSED APPROACH: Climb to 2600 direct PONOI and hold.	
<p>⚠ Circling NA north of Rwy 6-24. Rwy 25 helicopter visibility reduction below 3/4 NA.</p>		SAIPAN TOWER	GND CON
ATIS	GUAM CERAP	125.7 256.9	121.8
127.2	118.4 290.5		



ELEV 215	D	TDZE 210
----------	----------	----------



CATEGORY	A	B	C	D
LNAV MDA	600-1	390 (400-1)	600-1½	390 (400-1½)
CIRCLING	720-1	505 (600-1)	720-1½	780-2
			505 (600-1½)	565 (600-2)

PAC, 19 MAR 2026 to 14 MAY 2026

PAC, 19 MAR 2026 to 14 MAY 2026