

APP CRS <b>184°</b>	Rwy Idg TDZE Apt Elev	<b>N/A</b> <b>N/A</b> <b>1179</b>
------------------------	-----------------------------	---

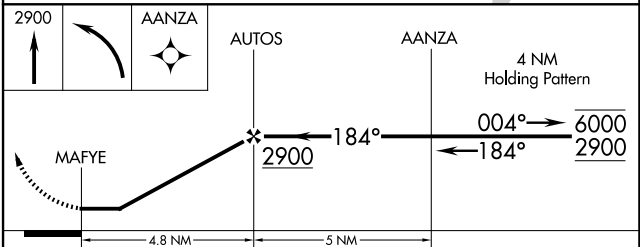
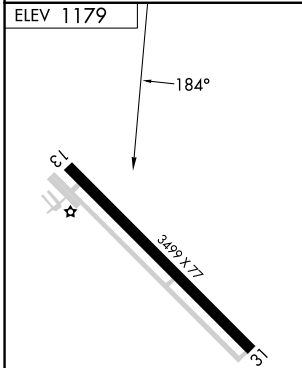
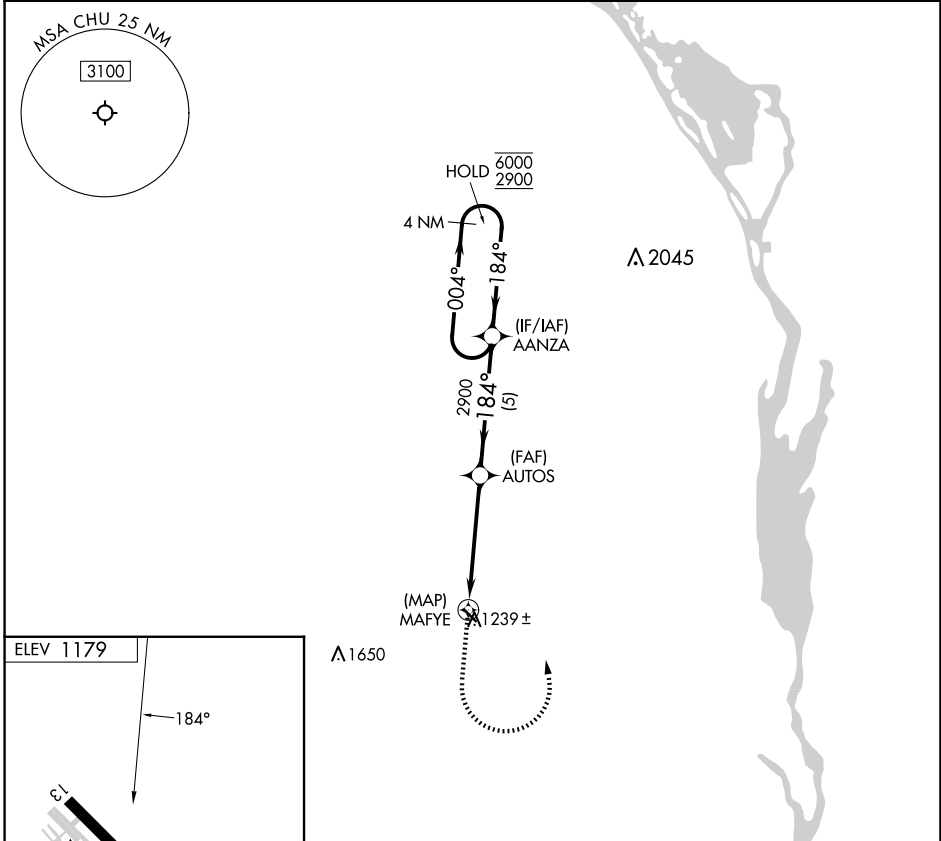
# RNAV (GPS)-B

HOUSTON COUNTY (CHU)

RNP APCH - GPS.  
 Procedure NA at night. Rwy 13 and 31 helicopter visibility reduction below 1 SM NA. Use La Crosse Rgnl altimeter setting.

MISSED APPROACH: Climb to 2900 then left turn direct AANZA and hold.

LSE ASOS <b>124.95</b>	MINNEAPOLIS CENTER <b>128.6 363.0</b>	CTAF <b>122.9 0</b>
---------------------------	--	------------------------



CATEGORY	A	B	C	D
CIRCLING	1820-1	641 (700-1)	NA	

NC-1, 19 MAR 2026 to 16 APR 2026

NC-1, 19 MAR 2026 to 16 APR 2026