

WAAS CH 82533 W21A	APP CRS 219°	Rwy Ldg TDZE Apt Elev	4000 963 963
--	------------------------	-----------------------------	---

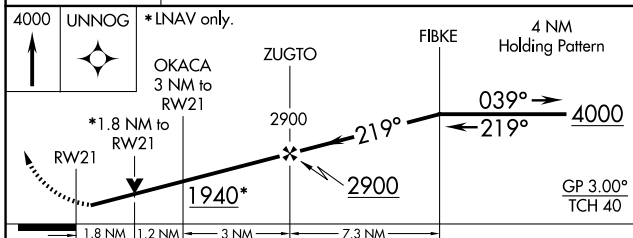
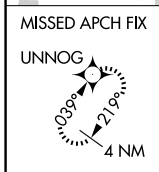
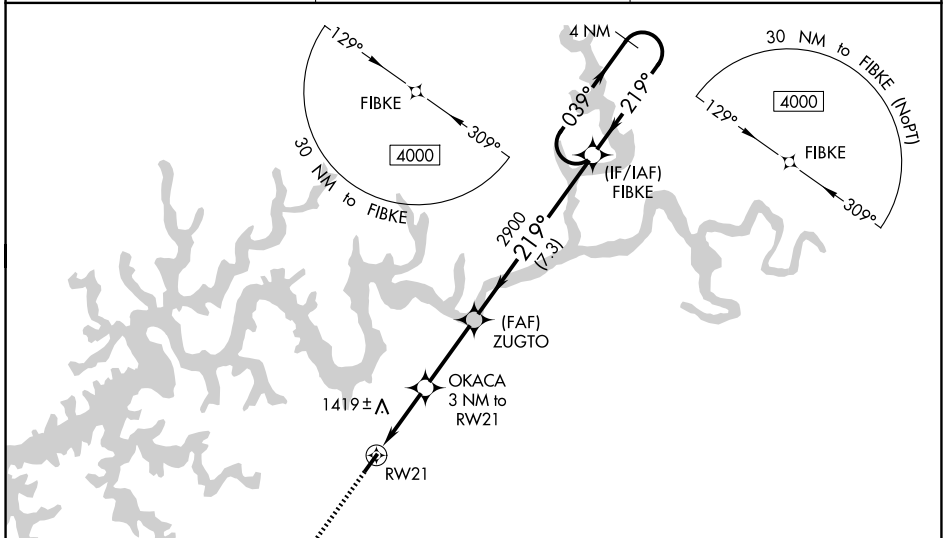
RNAV (GPS) RWY 21

WAYNE COUNTY (EKQ)

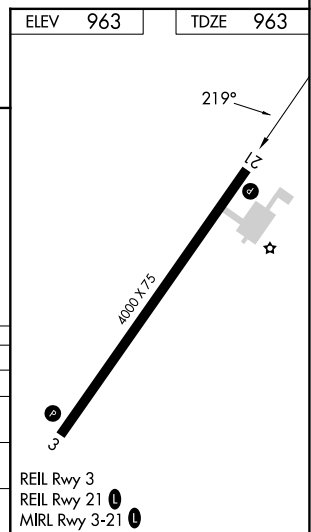
⚠ Baro-VNAV NA when using Somerset altimeter setting. For uncompensated Baro-VNAV systems, LNAV/VNAV NA below -16°C (4°F) or above 54°C (130°F). DME/DME RNP-0.3 NA. VDP NA with Somerset altimeter setting. Helicopter visibility reduction below ¾ SM NA. When local altimeter setting not received, use Somerset altimeter setting and increase all DA 44 feet, and all MDA 60 feet; increase LPV all Cats visibility ½ mile and LNAV/VNAV all Cats visibility ½ mile. Night landing: Rwy 3 NA.

MISSED APPROACH: Climb to 4000 direct UNNOG and hold.

AWOS-3PT 118.825	INDIANAPOLIS CENTER 124.625 371.925	UNICOM 122.8 (CTAF)
----------------------------	---	-------------------------------



CATEGORY	A	B	C	D
LPV DA	1257-1	294 (300-1)		NA
LNAV/VNAV DA	1666-2½	703 (800-2½)		NA
LNAV MDA	1580-1	617 (700-1)		NA
CIRCLING	1780-1¼ 817 (900-1¼)	1840-1¼ 877 (900-1¼)		NA



SE-1, 19 MAR 2026 to 16 APR 2026

SE-1, 19 MAR 2026 to 16 APR 2026