

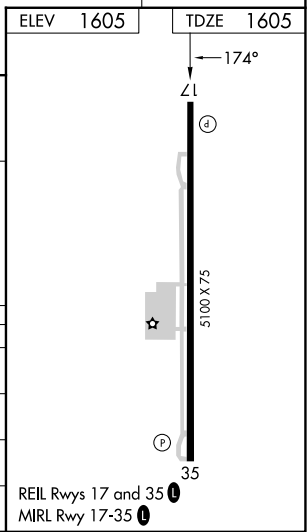
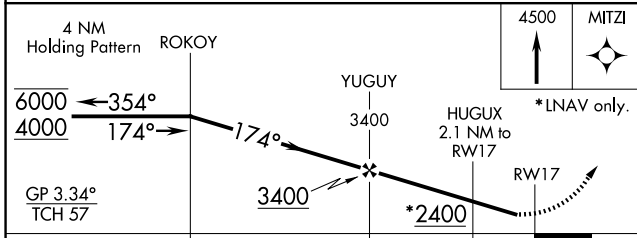
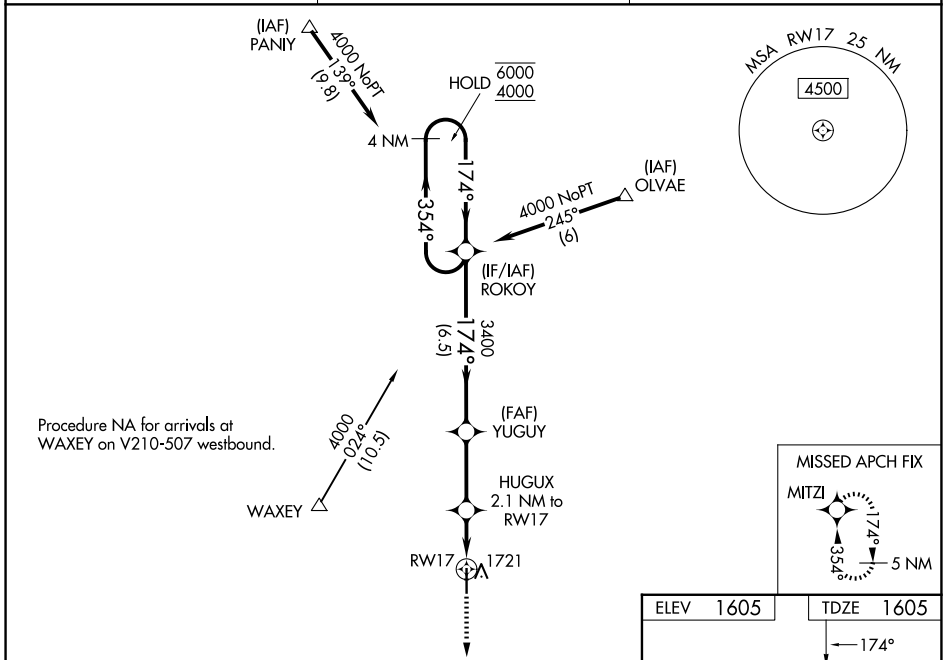
WAAS CH 82032 W17A	APP CRS 174°	Rwy Ldg TDZE Apt Elev	5100 1605 1605
--	------------------------	-----------------------------	---

RNAV (GPS) RWY 17

WEATHERFORD STAFFORD (OJA)

RNP APCH.	<p>▼ Rwy 17 helicopter visibility reduction below 1 SM NA. For uncompensated Baro-VNAV systems, LNAV/VNAV NA below -18°C or above 54°C. Straight-in Rwy 17 at night, Circling Rwy 35 at night, operational VGSI required, remain on or above the VGSI glidepath until threshold.</p>	MISSED APPROACH: Climb to 4500 direct MITZI and hold.
-----------	--	---

AWOS-3PT 118.575	FORT WORTH CENTER 128.4 269.37	UNICOM 122.8 (CTAF) 0
----------------------------	--	---------------------------------



CATEGORY	A	B	C	D
LPV DA	1875-1	270 (300-1)		NA
LNAV/VNAV DA	1921-1	316 (400-1)		NA
LNAV MDA	2040-1	435 (500-1)	2040-1¼ 435 (500-1¼)	NA
CIRCLING	2080-1 475 (500-1)	2140-1 535 (600-1)	2380-2¼ 775 (800-2¼)	NA

SC-1, 19 MAR 2026 to 16 APR 2026

SC-1, 19 MAR 2026 to 16 APR 2026