

WAAS CH 97534 W35A	APP CRS 354°	Rwy Ldg TDZE Apt Elev	5100 1605 1605
--	------------------------	-----------------------------	---

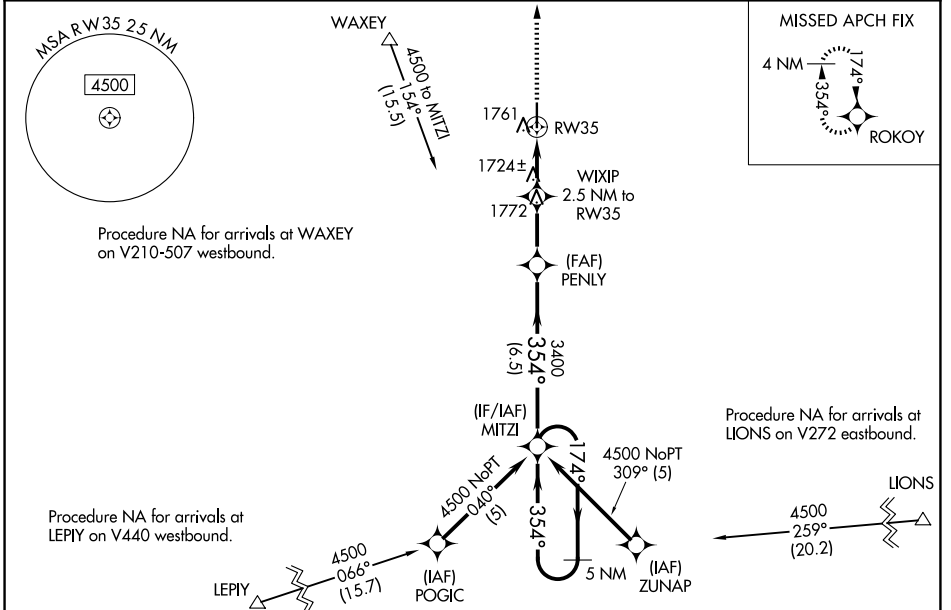
RNAV (GPS) RWY 35

WEATHERFORD STAFFORD (OJA)

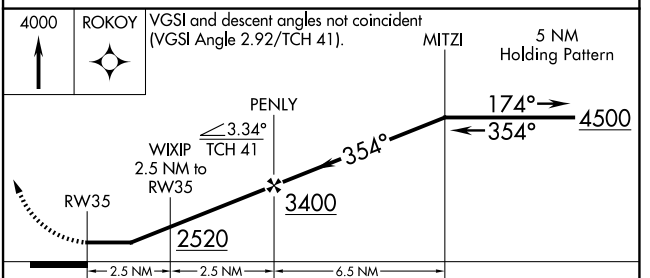
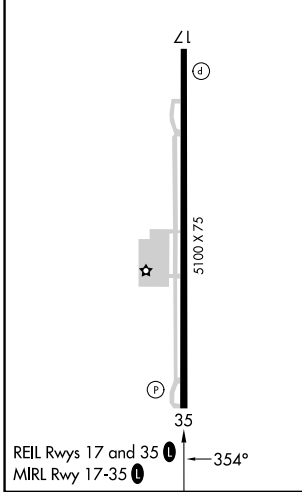
RNP APCH.
 ⚠ Straight-in Rwy 35 at night, Circling Rwy 17 at night, operational VGSI required, remain on or above VGSI glidepath until threshold. Rwy 17 helicopter visibility below 1 SM NA. When local altimeter setting not received, use Clinton Rgnl altimeter setting: increase all MDA 40 feet and visibility Cat C ¼ mile.

MISSED APPROACH:
 Climb to 4000 direct ROKOY and hold.

AWOS-3PT 118.575	FORT WORTH CENTER 128.4 269.37	UNICOM 122.8 (CTAF) 0
----------------------------	--	---------------------------------



ELEV 1605	TDZE 1605
-----------	-----------



CATEGORY	A	B	C	D
LP MDA	1980-1 375 (400-1)			NA
LNAV MDA	2020-1 415 (500-1)	2020-1 415 (500-1) 2020-1 415 (500-1) 2020-1 415 (500-1)		NA
CIRCLING	2080-1 475 (500-1)	2140-1 535 (600-1)	2380-2 775 (800-2)	NA

SC-1, 19 MAR 2026 to 16 APR 2026

SC-1, 19 MAR 2026 to 16 APR 2026