

WAAS CH <b>90514</b> <b>W27A</b>	APP CRS <b>266°</b>	Rwy Ldg TDZE Apt Elev	<b>5002</b> <b>4053</b> <b>4053</b>
--	------------------------	-----------------------------	---

# RNAV (GPS) RWY 27

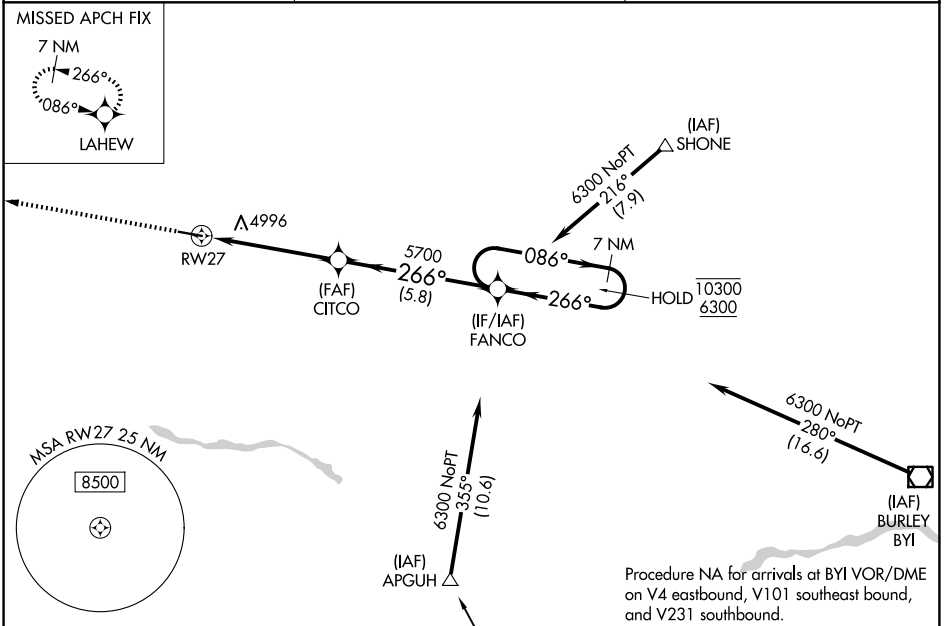
JEROME COUNTY (JER)

RNP APCH - GPS.

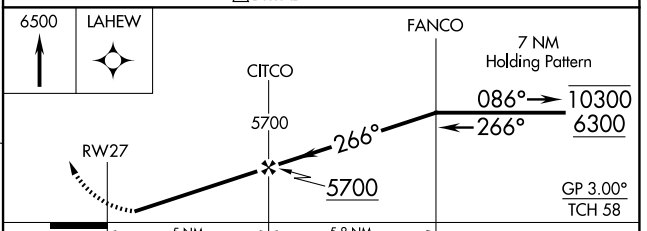
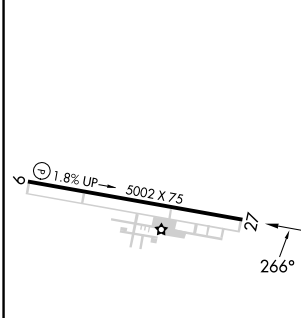
▼ Procedure NA at night. Circling NA north of Rwy 9-27.  
 ▲ Rwy 27 helicopter visibility reduction below 1 SM NA.

MISSED APPROACH: Climb to 6500 direct LAHEW and hold.

ASOS <b>135.225</b>	TWIN FALLS APP CON * <b>126.7 353.75</b>	UNICOM <b>122.8 (CTAF) 0</b>
------------------------	---	---------------------------------



ELEV 4053	TDZE 4053
-----------	-----------



CATEGORY	A	B	C	D
LPV DA	4403-1 350 (400-1)			
LNAV MDA	5300-1¼ 1247 (1300-1¼)	5300-1½ 1247 (1300-1½)	5300-3	1247 (1300-3)
CIRCLING	5300-1¼ 1247 (1300-1¼)	5300-1½ 1247 (1300-1½)	5300-3	1247 (1300-3)

NW-1, 19 MAR 2026 to 16 APR 2026

NW-1, 19 MAR 2026 to 16 APR 2026