

WAAS CH 42933 W20A	APP CRS 198°	Rwy Ldg 4150 TDZE 874 Apt Elev 878
--	------------------------	---

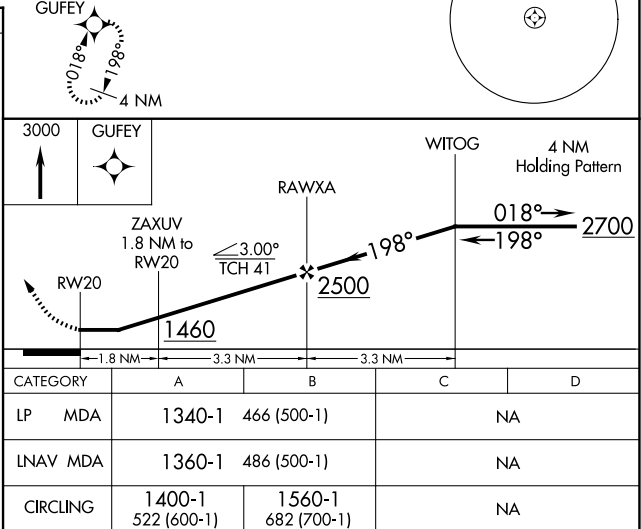
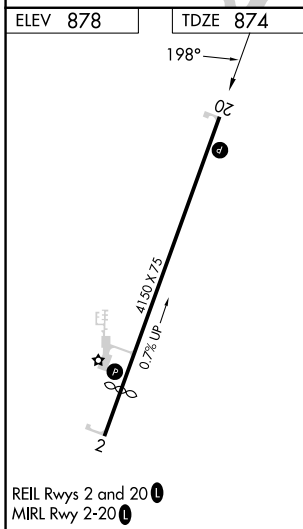
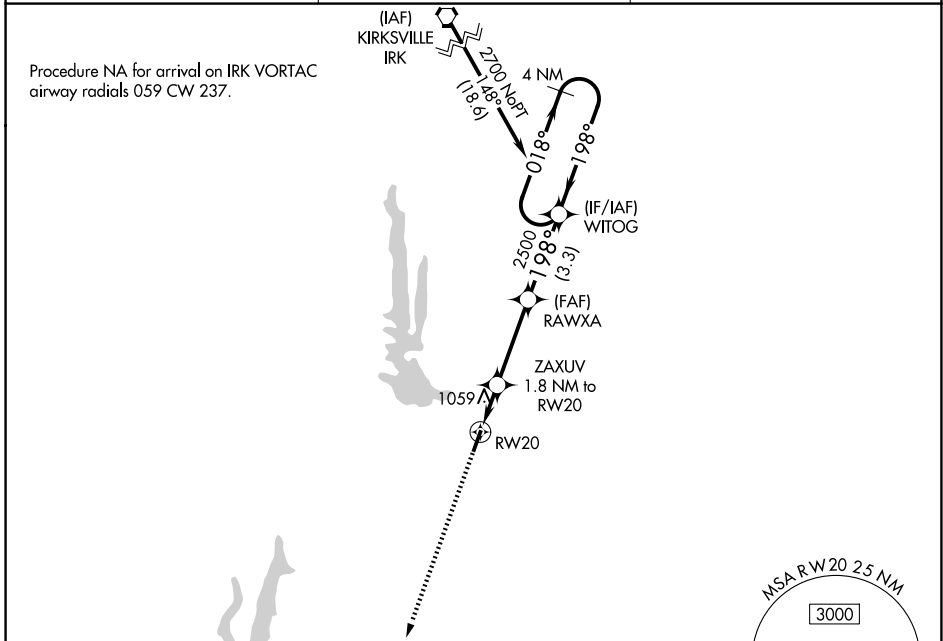
RNAV (GPS) RWY 20

MACON-FOWER MEML (K89)

NA DME/DME RNP-0.3 NA. Use Moberly altimeter setting; when not received, use Columbia altimeter setting and increase all MDA 100 feet. Helicopter visibility reduction below 1 SM NA. Night landing: Rwy 20 NA.

MISSED APPROACH: Climb to 3000 direct GUFY and hold.

MBY AWOS-3PT 120.025	KANSAS CITY CENTER 132.6 370.9	UNICOM 122.8 (CTAF)
--------------------------------	--	-------------------------------



NC-3, 19 MAR 2026 to 16 APR 2026

NC-3, 19 MAR 2026 to 16 APR 2026