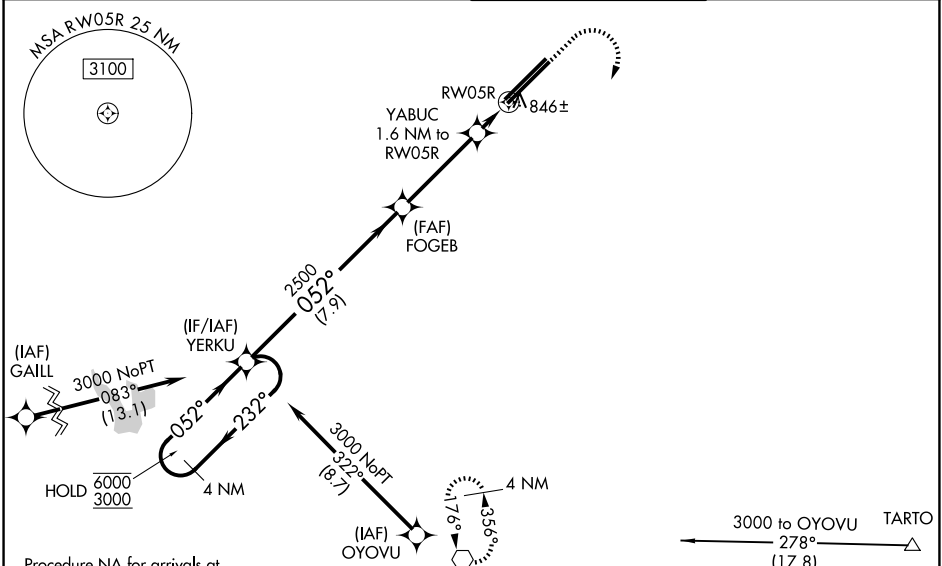


WAAS CH 78410	APP CRS 052°	Rwy Ldg 12103
W05A		TDZE 736
		Apt Elev 744

RNAV (GPS) RWY 5R

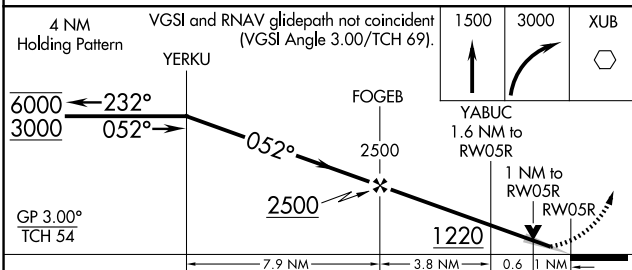
RICKENBACKER INTL (LCK)

RNP APCH - GPS			ALSF-2 	MISSED APPROACH: Climb to 1500 then climbing right turn to 3000 direct XUB VOR and hold.
ATIS 132.75	COLUMBUS APP CON 134.0 279.6	RICK TOWER 120.05 348.4		

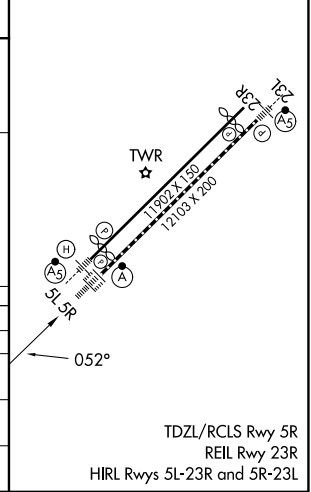


Procedure NA for arrivals at GAILL on V19 southwest bound.

ELEV	744	TDZE	736
------	-----	------	-----



CATEGORY	A	B	C	D
LPV DA		936/18	200 (200-1/2)	
LNAM/VNAV DA		1103/35	367 (400-5/8)	
LNAM MDA	1120/24	384 (400-1/2)	1120/35	384 (400-5/8)
CIRCLING	1240-1	496 (500-1)	1280-1 1/2 536 (600-1 1/2)	1400-2 656 (700-2)



TDZL/RCLS Rwy 5R
REIL Rwy 23R
HIRL Rwys 5L-23R and 5R-23L

EC-2, 19 MAR 2026 to 16 APR 2026

EC-2, 19 MAR 2026 to 16 APR 2026