

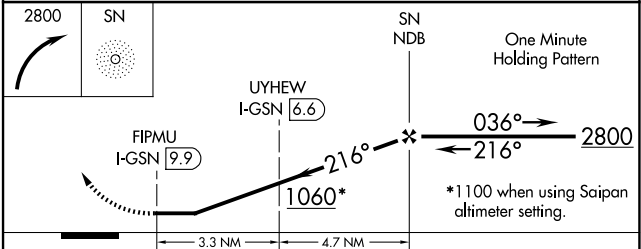
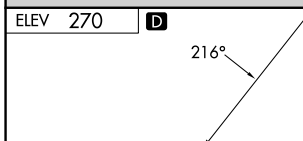
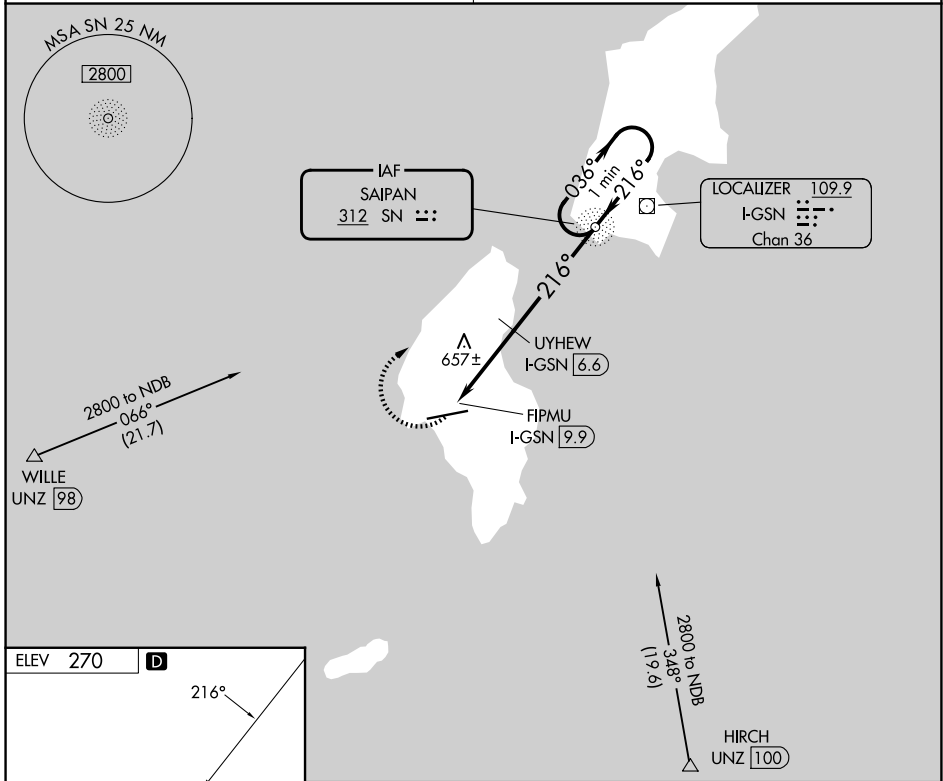
SN NDB <b>312</b>	APP CRS <b>216°</b>	Rwy Ldg TDZE Apt Elev	<b>N/A</b> <b>N/A</b> <b>270</b>
----------------------	------------------------	-----------------------------	--

**NDB-A**  
FRANCISCO MANGLONA BORJA/TINIAN INTL (TNI)(PGWT)

**NA** Obtain local altimeter setting on CTAF; when not received, use Saipan altimeter setting and increase all MDA 40 feet, and all Cats visibility ¼ SM. Increase UYHEW fix minimums Cats C and D visibility ¼ mile. # DME from I-GSN LOC/DME.

MISSED APPROACH: Climbing right turn to 2800 direct SN NDB and hold.

GUAM CERAP <b>118.4 290.5</b>	SAIPAN RADIO <b>123.6 (CTAF) 0</b>
----------------------------------	---------------------------------------



ELEV 270 **D**

MIRL Rwy 8-26 **0**  
REIL Rwy 8 and 26 **0**

FAF to MAP 8 NM

Knots	60	90	120	150	180
Min:Sec	8:00	5:20	4:00	3:12	2:40

CATEGORY	A	B	C	D
CIRCLING	1060-1	790 (800-1)	1060-2¼ 790 (800-2¼)	1060-2½ 790 (800-2½)
# UYHEW FIX MINIMUMS				
CIRCLING	1000-1	730 (800-1)	1000-2 730 (800-2)	1060-2½ 790 (800-2½)