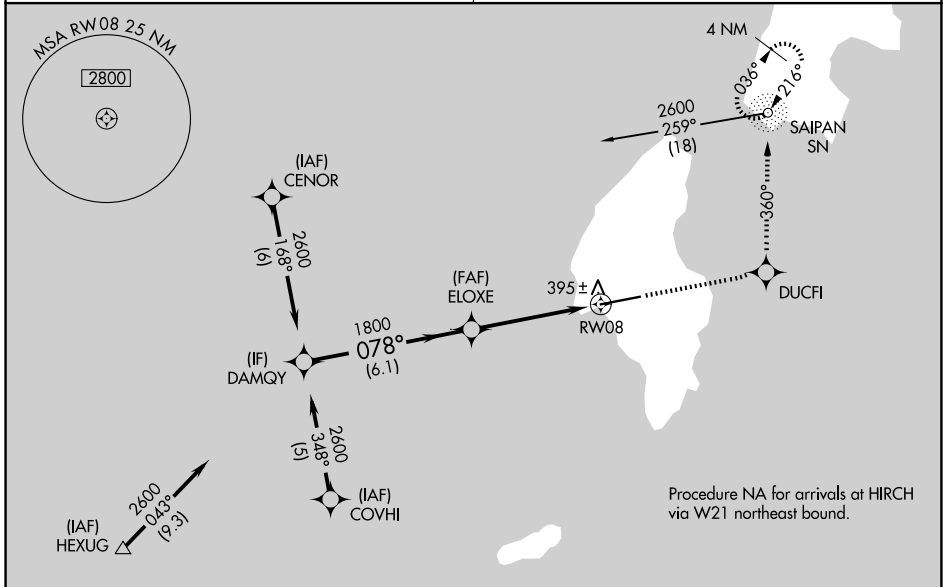


| | | |
|-------------|----------|-------------|
| APP CRS | Rwy Ldg | 8600 |
| 078° | TDZE | 243 |
| | Apt Elev | 270 |

RNAV (GPS) RWY 8

FRANCISCO MANGLONA BORJA/TINIAN INTL (TNI)(PGWT)

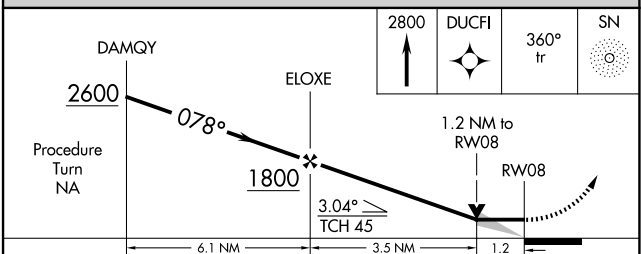
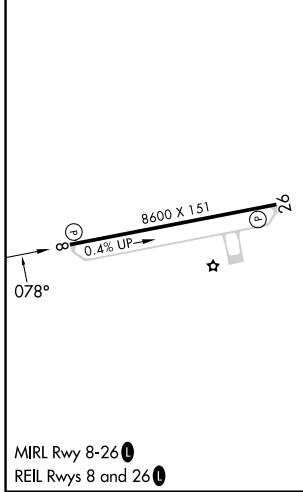
| | | |
|------------|---|--|
| RNP APCH | Obtain local altimeter setting on CTAF; when not received, use Saipan altimeter setting. VDP NA when using Saipan altimeter setting. | MISSED APPROACH: Climb to 2800 direct DUCFI and via 360° track to SN NDB and hold, continue climb-in-hold to 2800. |
| GUAM CERAP | 118.4 290.5 | SAIPAN RADIO 123.6 (CTAF) 0 |



Procedure NA for arrivals at HEXUG via A221 northbound.

Procedure NA for arrivals at HIRCH via W21 northeast bound.

| | | |
|----------|----------|----------|
| ELEV 270 | D | TDZE 243 |
|----------|----------|----------|



| CATEGORY | A | B | C | D |
|-----------------------------------|----------------------|----------------------|-------------------------|-------------------------|
| LNAV MDA | 660-1 | 417 (400-1) | 660-1¼ | 417 (400-1¼) |
| CIRCLING | 760-1 490 (500-1) | 860-1 590 (600-1) | 1000-2 730 (800-2) | 1060-2½ 790 (800-2½) |
| SAIPAN ALTIMETER SETTING MINIMUMS | | | | |
| LNAV MDA | 680-1 | 437 (500-1) | 680-1¼ 437 (500-1¼) | 680-1½ 437 (500-1½) |
| CIRCLING | 800-1 530 (600-1) | 900-1 630 (700-1) | 1040-2¼ 770 (800-2¼) | 1100-2¾ 830 (900-2¾) |

RNAV (GPS) RWY 8

PAC, 19 MAR 2026 to 14 MAY 2026

PAC, 19 MAR 2026 to 14 MAY 2026