

WAAS CH <b>90139</b> <b>W35A</b>	APP CRS <b>352°</b>	Rwy Idg TDZE Apt Elev	<b>4794</b> <b>1010</b> <b>1033</b>
--	------------------------	-----------------------------	---

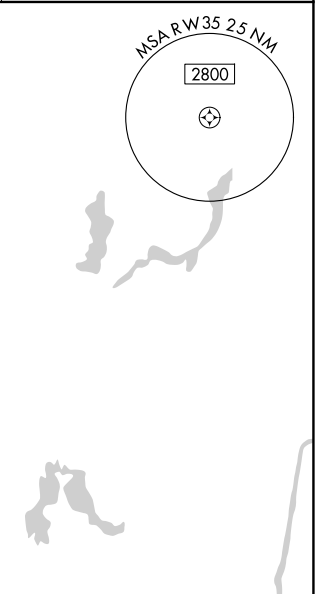
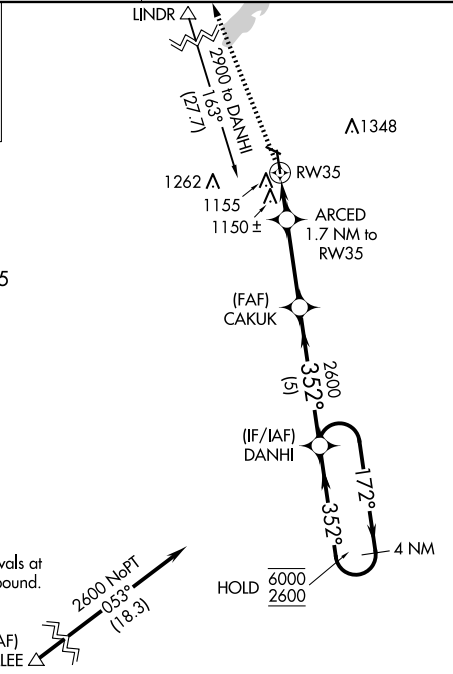
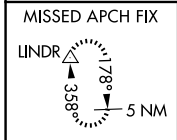
# RNAV (GPS) RWY 35

MORA MUNI (JMR)

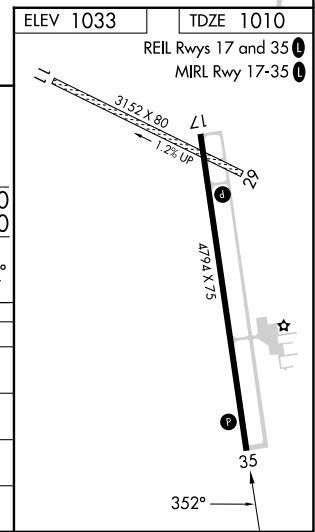
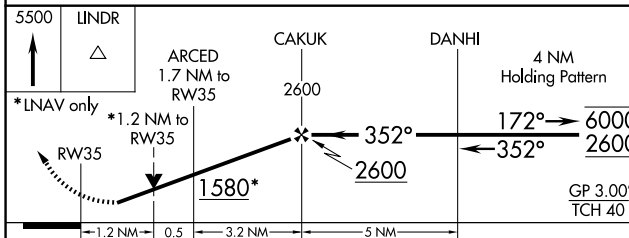
RNP APCH.  
 ▼ Circling NA to Rwys 11 and 29. Circling Rwy 17 NA at night.  
 ▲ Rwy 35 helicopter visibility reduction below 3/4 SM NA.  
 For uncompensated Baro-VNAV systems, LNAV/VNAV NA below -17°C or above 54°C.

MISSED APPROACH: Climb to 5500 direct LINDR and hold, continue climb-in-hold to 5500.

AWOS-3 <b>123.925</b>	MINNEAPOLIS CENTER <b>121.05 235.775</b>	UNICOM <b>122.8 (CTAF) 0</b>
--------------------------	---	---------------------------------



Procedure NA for arrivals at OLLEE on T383 southbound.  
 (IAF) OLLEE ▲ 2600 M0PT 053° (18.3)  
 (IF/IAF) DANHI 2600 352° (G)  
 (FAF) CAKUK 2600 352°  
 ARCED 1.7 NM to RW35  
 1155 1150 ±  
 1262 ▲  
 2600 to DANHI 163° (27.1)  
 LINDR ▲ 2600  
 A1348  
 A1585  
 HOLD 6000 2600  
 4 NM  
 172° 352°



CATEGORY	A	B	C	D
LPV DA		1269-1	259 (300-1)	
LNAV/VNAV DA		1316-1	306 (300-1)	
LNAV MDA	1420-1	410 (400-1)	1420-1 1/8	410 (400-1 1/8)
<b>C</b> CIRCLING	1480-1 447 (500-1)	1500-1 467 (500-1)	1700-2 667 (700-2)	1700-2 1/4 667 (700-2 1/4)

NC-1, 19 MAR 2026 to 16 APR 2026

NC-1, 19 MAR 2026 to 16 APR 2026