

LOC/DME I-JVX 110.15 Chan 38 (Y)	APP CRS 346°	Rwy Ldg 34R 11000 10409 34L TDZE 681 687 Apt Elev 723 723
--	------------------------	---

ILS or LOC RWY 34R

PEROT FLD/FORT WORTH ALLIANCE (AFW)

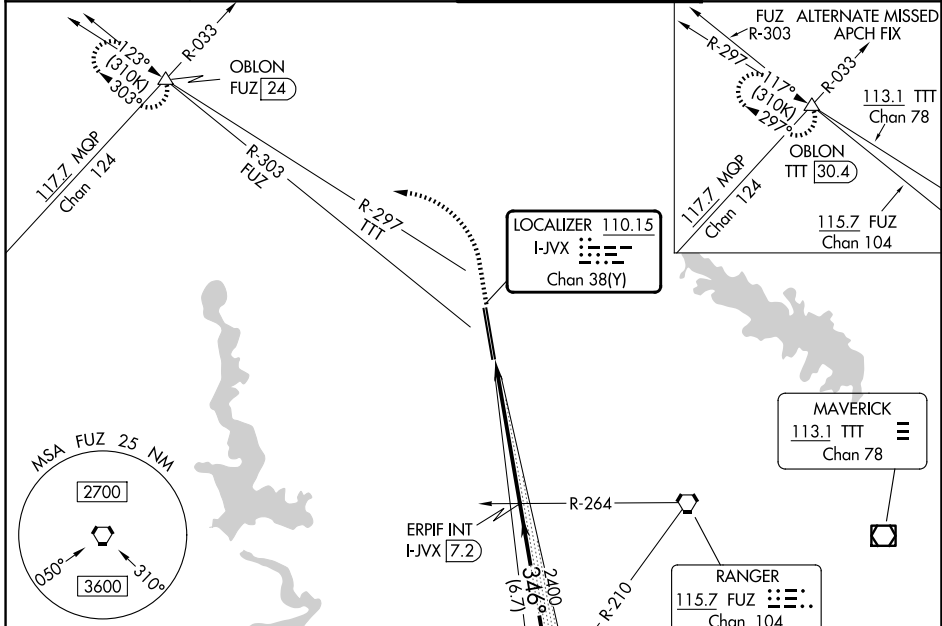
RADAR required for procedure entry.

⚠ Circling NA east of Rwy 16L-34R. For inop ALS, increase S-ILS 34R Cat E visibility to RVR 4000 and S-LOC 34R Cat E visibility to 1% SM.

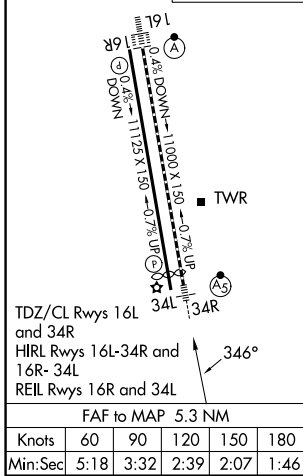
⚠ MALSR

MISSED APPROACH: Climb to 1200 then climbing left turn to 3000 on heading 270° and FUZ VORTAC R-303 to OBLON INT/FUZ 24 DME and hold.

ATIS 126.925	LONE STAR APP CON 118.1 306.95	ALLIANCE TOWER 135.15 257.9	GND CON 132.65 306.2
------------------------	--	---------------------------------------	--------------------------------



ELEV 723	D TDZE 34R 681
	TDZE 34L 687



CATEGORY	A	B	C	D	E
S-ILS 34R	881/18		200 (200-1/2)		
S-LOC 34R	1240/24	559 (600-1/2)	1240/60	559 (600-1/4)	
SIDESTEP 34L	1240-1	553 (600-1)	1240-1 1/2 553 (600-1/2)	1240-2	553 (600-2)
CIRCLING	1240-1 517 (600-1)	1320-1 597 (600-1)	1360-1 3/4 637 (700-1 3/4)	1360-2 637 (700-2)	1380-2 1/4 657 (700-2 1/4)

ILS or LOC RWY 34R

SC-2, 19 MAR 2026 to 16 APR 2026

SC-2, 19 MAR 2026 to 16 APR 2026