

WAAS CH 82602 W34A	APP CRS 344°	Rwy Ldg TDZE Apt Elev	8500 707 707
--	------------------------	-----------------------------	---

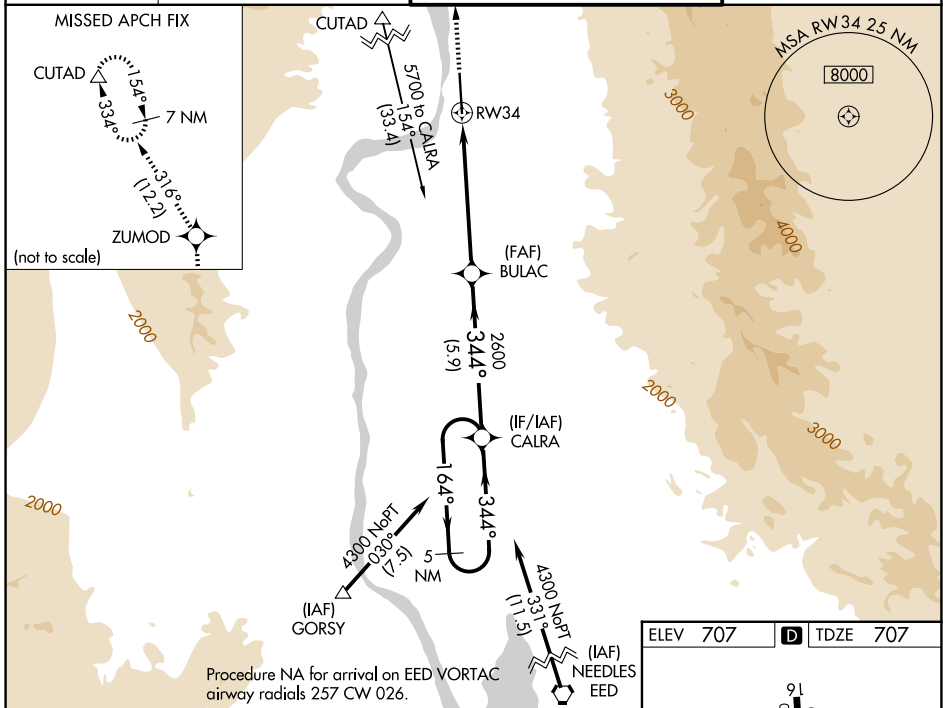
RNAV (GPS) RWY 34

LAUGHLIN/BULLHEAD INTL (IFP)

⚠ For uncompensated Baro-VNAV systems, LNAV/VNAV NA below -16°C (4°F) or above 54°C (130°F).
⚠ Rwy 34 helicopter visibility reduction below ¾ SM NA.
 DME/DME RNP-0.3 NA.
 Circling Rwy 16 NA at night.

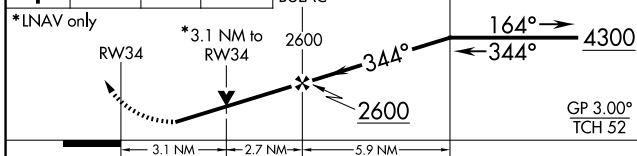
MISSED APPROACH: Climb to 7600 direct ZUMOD and on track 316° to CUTAD and hold, continue climb-in-hold to 7600.

ATIS 119.825	LOS ANGELES CENTER 134.65 360.65	BULLHEAD TOWER* 123.9 (CTAF) 0	GND CON 118.25
------------------------	--	--	--------------------------

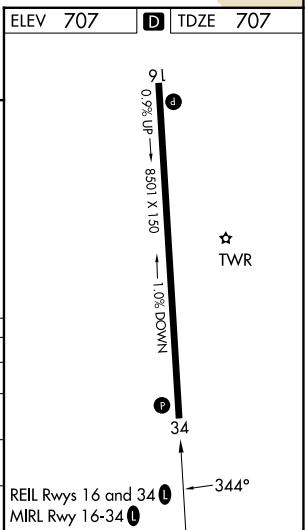


Procedure NA for arrival on EED VORTAC
 airway radials 257 CW 026.

7600 ↑	ZUMOD ✧	tr 316°	CUTAD △	VGSI and RNAV glidepath not coincident (VGSI Angle 3.00/TCH 45). 5 NM Holding Pattern
			BULAC	CALRA



CATEGORY	A	B	C	D
LPV DA	1352-2½		645 (700-2½)	
LNAV/VNAV DA	1506-3		799 (800-3)	
LNAV MDA	1740-1¼ 1033 (1100-1¼)	1740-1½ 1033 (1100-1½)	1740-3	1033 (1100-3)
CIRCLING	1740-1¼ 1033 (1100-1¼)	1740-1½ 1033 (1100-1½)	1800-3 1093 (1100-3)	2340-3 1633 (1700-3)



SW-4, 19 MAR 2026 to 16 APR 2026

SW-4, 19 MAR 2026 to 16 APR 2026