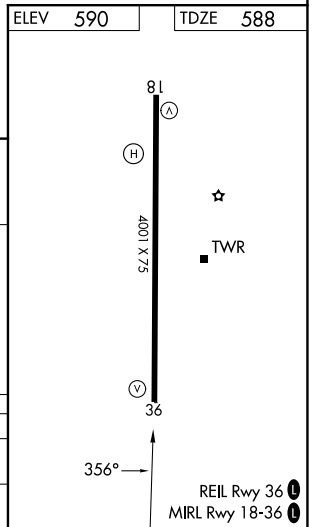
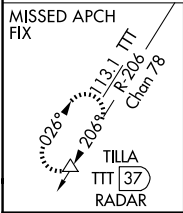
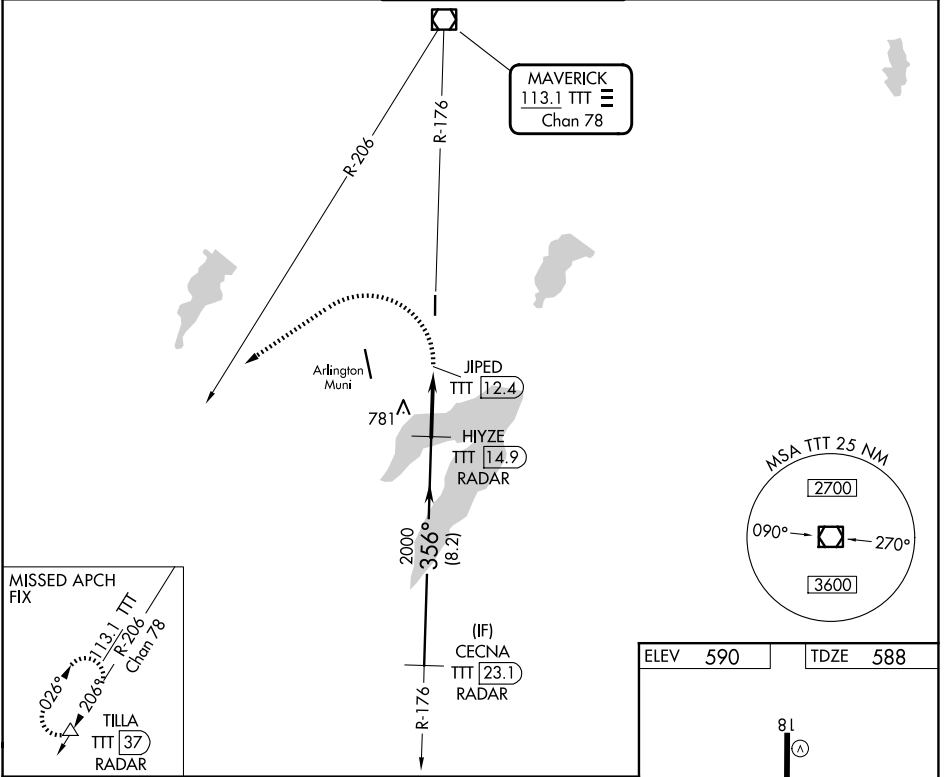


VOR/DME TTT <b>113.1</b> Chan <b>78</b>	APP CRS <b>356°</b>	Rwy Ldg TDZE <b>588</b> Apt Elev <b>590</b>	<b>4001</b>
---	------------------------	---	-------------

# VOR RWY 36

GRAND PRAIRIE MUNI (GPM)

RADAR and DME required.		MISSED APPROACH: Climbing left turn to 3000 on heading 230° and TTT VOR/DME R-206 to TILLA/37 DME/RADAR and hold.	
Circling Rwy 18 NA at night.		GRAND PRAIRIE TOWER ★ <b>128.55</b> (CTAF)	GND CON <b>121.15</b>
AWOS-3P <b>118.475</b>	LONE STAR APP CON <b>135.975 379.9</b>	UNICOM <b>123.075</b>	



VGSI and descent angles not coincident (VGSI Angle 4.00/TCH 37).

CECNA TTT 23.1 RADAR	HIYZE TTT 14.9 RADAR	JIPED TTT 12.4	3000 hdg 230° TTT R-206	TILLA △
----------------------------	----------------------------	-------------------	-------------------------------	------------

2000 — 356° — 2000 — 3.00° TCH 37 —

8.2 NM      2.5 NM

CATEGORY	A	B	C	D
S-36	1040-2½	452 (500-2½)		NA
CIRCLING	1100-2½ 510 (600-2½)	1280-2½ 690 (700-2½)		NA

SC-2, 19 MAR 2026 to 16 APR 2026

SC-2, 19 MAR 2026 to 16 APR 2026