

WAAS CH 69442 W20A	APP CRS 200°	Rwy Ldg TDZE Apt Elev	5002 463 472
--	------------------------	-----------------------------	---

RNAV (GPS) RWY 20

MC CURTAIN COUNTY RGNL (404)

RNP APCH - GPS.

⚠ Rwy 20 helicopter visibility reduction below $\frac{3}{4}$ SM NA. For uncompensated Baro-VNAV systems, LNAV/VNAV NA below -15°C or above 54°C. Inop table does not apply to LPV, and LNAV Cat A and B. For inop ALS, increase LNAV/VNAV Cat C visibility to 1 $\frac{3}{8}$ SM.

ODALS

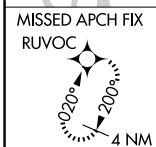
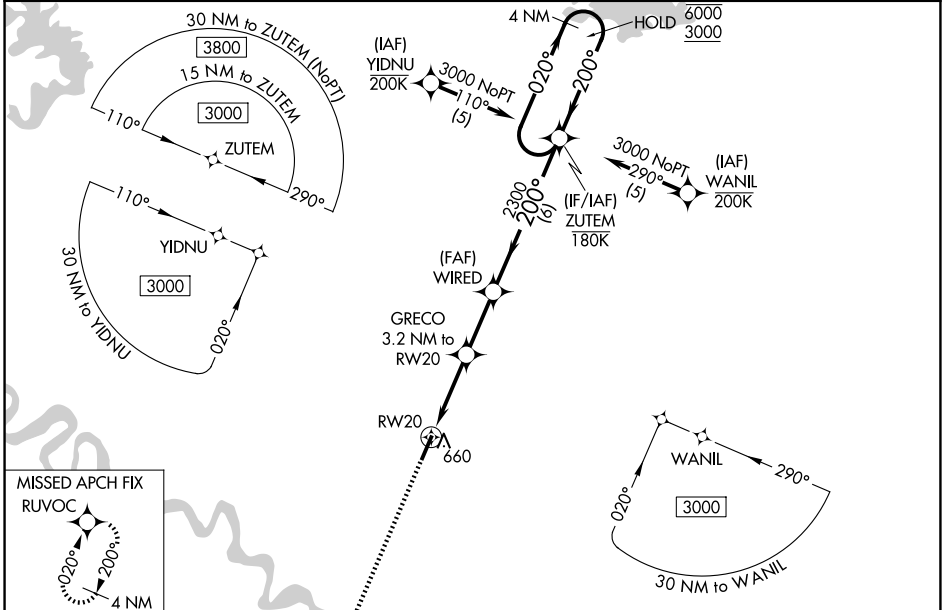


MISSED APPROACH: Climb to 2500 direct RUVOC and hold.

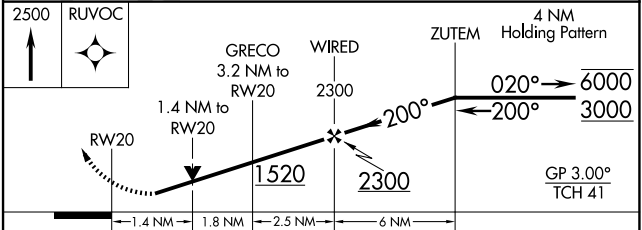
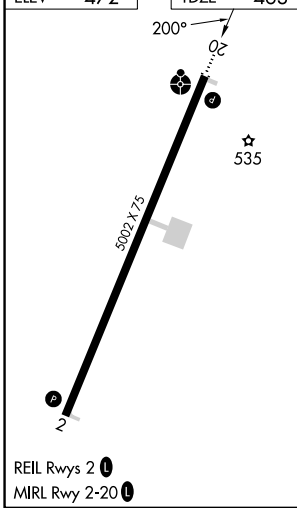
AWOS-3
120.0

FORT WORTH CENTER
123.925 269.475

UNICOM
122.8 (CTAF)



ELEV	472	TDZE	463
------	-----	------	-----



CATEGORY	A	B	C	D
LPV DA	713-1		250 (300-1)	NA
LNAV/VNAV DA	913-1 $\frac{1}{8}$		450 (500-1 $\frac{1}{8}$)	NA
LNAV MDA	960-1	497 (500-1)	960-1 $\frac{1}{4}$ 497 (500-1 $\frac{1}{4}$)	NA
CIRCLING	1020-1	548 (600-1)	1100-1 $\frac{3}{4}$ 628 (700-1 $\frac{3}{4}$)	NA

SC-1, 19 MAR 2026 to 16 APR 2026

SC-1, 19 MAR 2026 to 16 APR 2026

REIL Rwy 2 **1**
MIRL Rwy 2-20 **1**