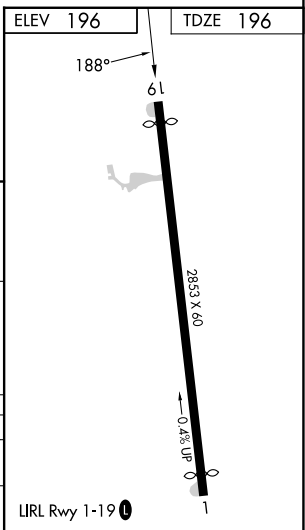
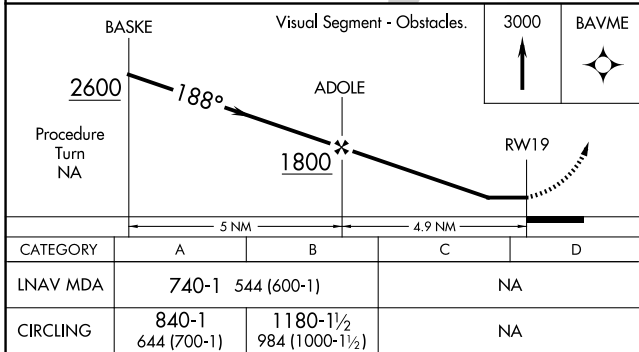
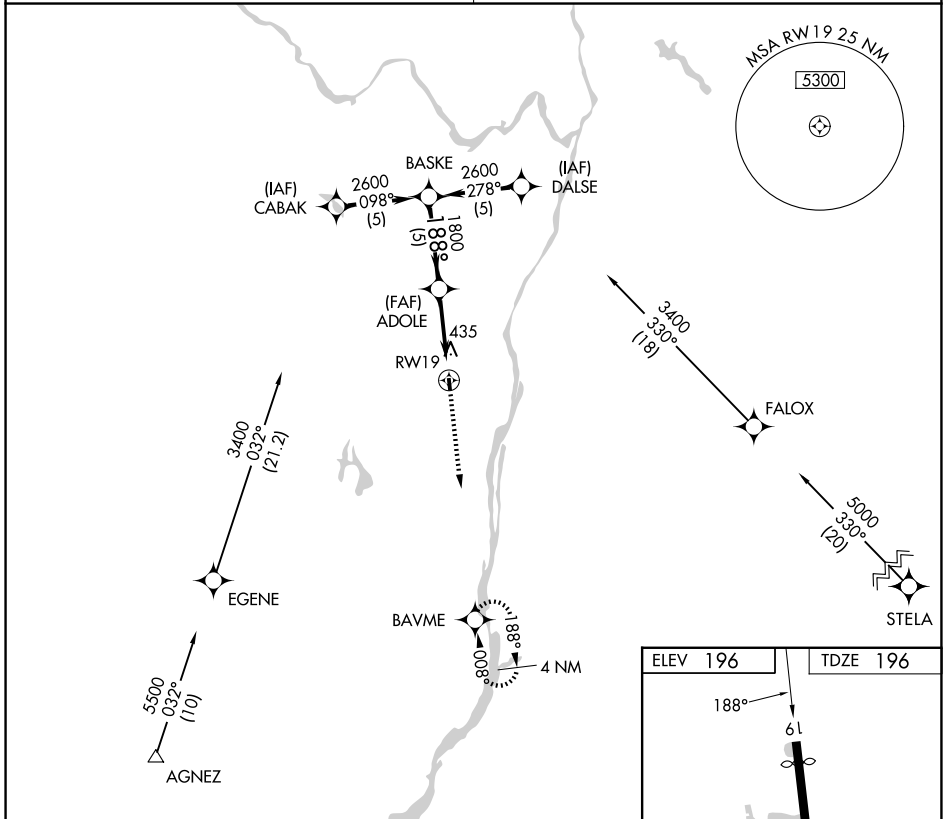


APP CRS	Rwy Ldg	2729
188°	TDZE	196
	Apt Elev	196

RNAV (GPS) RWY 19

SOUTH ALBANY (4B0)

RNP APCH.	MISSED APPROACH: Climb to 3000 direct BAVME WP and hold.
<p>▼ Use Albany Intl altimeter setting. Procedure NA at night.</p> <p>▲ NA Rwy 19 helicopter visibility reduction below 1 SM NA.</p>	
ALBANY APP CON 118.05 263.075	CTAF 122.9 0



NE-2, 19 MAR 2026 to 16 APR 2026

NE-2, 19 MAR 2026 to 16 APR 2026