

APP CRS <b>115°</b>	Rwy Ldg <b>2660</b>
	TDZE <b>30</b>
	Apt Elev <b>30</b>

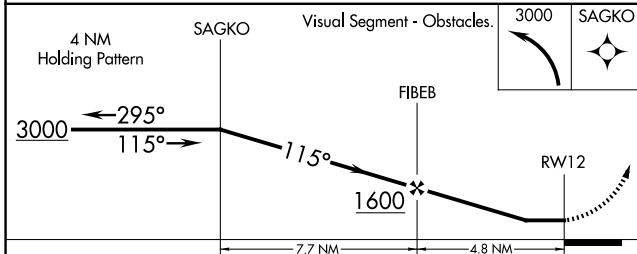
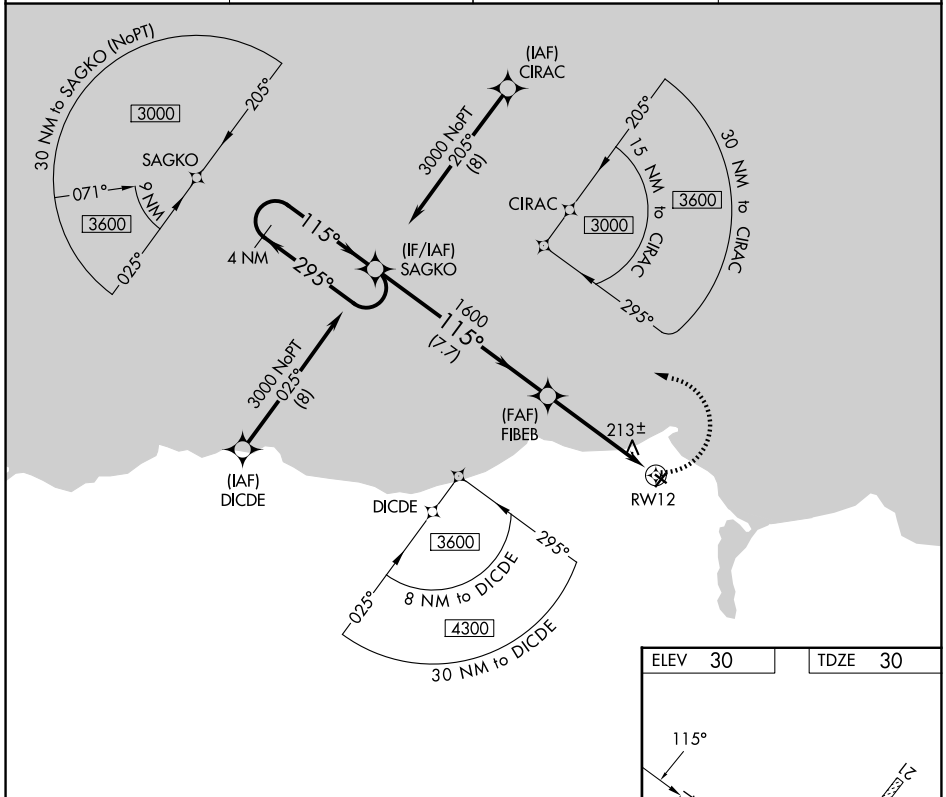
# RNAV (GPS) RWY 12

DEERING (DEE)(PADE)

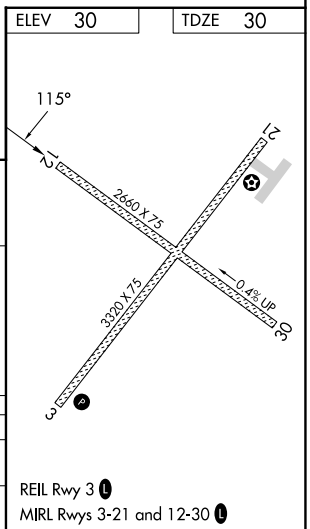
DME/DME RNP-0.3 NA.  
 Rwy 12 helicopter visibility reduction below 1 SM NA.  
 -39°C Straight-in Rwy 12 NA at night, Circling Rwy 12, 30 NA at night.

MISSED APPROACH: Climbing left turn to 3000 direct SAGKO and hold.

ASOS <b>135.5</b>	ANCHORAGE CENTER <b>119.2 263.0</b>	KOTZEBUE RADIO <b>122.25</b>	CTAF <b>122.9</b>
----------------------	--	---------------------------------	----------------------



CATEGORY	A	B	C	D
LNVA MDA	520-1	490 (500-1)	520-1 $\frac{3}{8}$ 490 (500-1 $\frac{3}{8}$ )	NA
CIRCLING	680-1 650 (700-1)	840-1 810 (900-1)	840-2 $\frac{1}{2}$ 810 (900-2 $\frac{1}{2}$ )	NA



AK, 19 MAR 2026 to 14 MAY 2026

AK, 19 MAR 2026 to 14 MAY 2026