

APP CRS	Rwy Ldg	2660
296°	TDZE	30
	Apt Elev	30

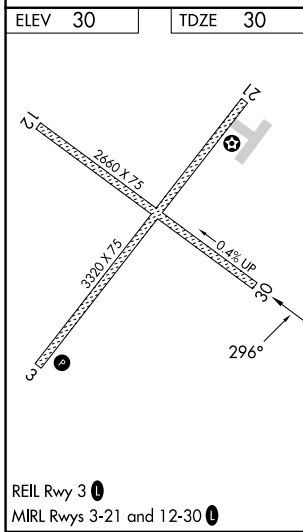
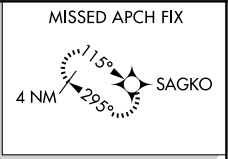
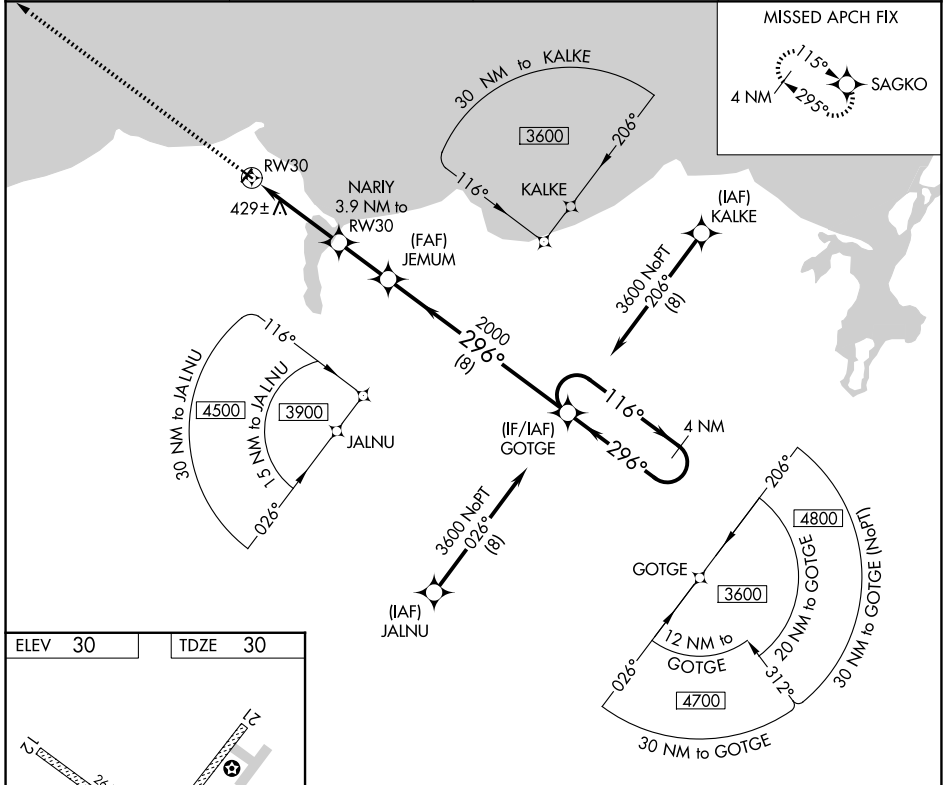
RNAV (GPS) RWY 30

DEERING (DEE)(PADE)

DME/DME RNP-0.3 NA.
 Rwy 30 helicopter visibility reduction below 1 SM NA.
 -39°C Straight-in Rwy 12 NA at night, Circling Rwy 12, 30 NA at night.

MISSED APPROACH: Climb to 3000 direct SAGKO and hold.

ASOS 135.5	ANCHORAGE CENTER 119.2 263.0	KOTZEBUE RADIO 122.25	CTAF 122.9
----------------------	--	---------------------------------	----------------------



3000 SAGKO 1300 RW30 2000 JEMUM 3600 GOTGE	Visual Segment - Obstacles.				
	JEMUM NARIY 3.9 NM to RW30		GOTGE 4 NM Holding Pattern		
3.9 NM		2.2 NM		8 NM	
CATEGORY	A	B	C	D	
INAV MDA	740-1	710 (800-1)	740-2 710 (800-2)	NA	
CIRCLING	740-1 710 (800-1)	840-1 810 (900-1)	840-2¼ 810 (900-2¼)	NA	

AK, 19 MAR 2026 to 14 MAY 2026

AK, 19 MAR 2026 to 14 MAY 2026