

APP CRS 204°	Rwy Ldg TDZE Apt Elev	3220 61 61
------------------------	-----------------------------	---------------------------------------

RNAV (GPS) RWY 20

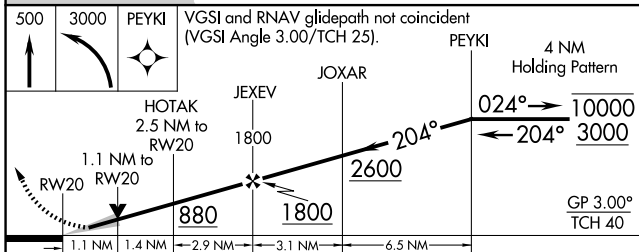
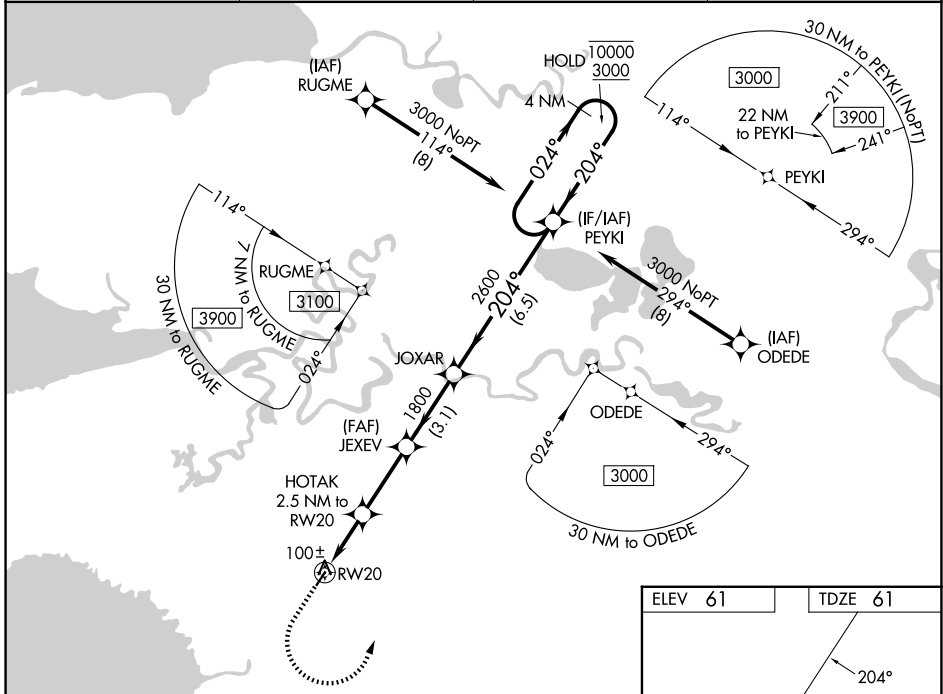
CHEVAK (VAK)(PAVA)

RNP APCH - GPS.

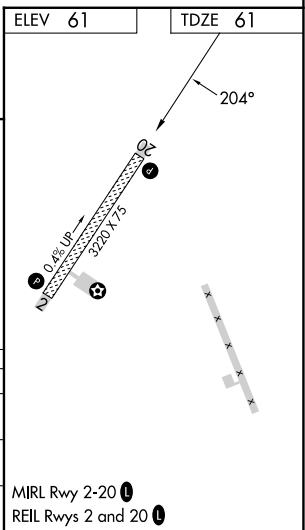
⚠ For uncompensated Baro-VNAV systems, LNAV/VNAV NA below -20°C or above 54°C. Baro-VNAV and VDP NA when using HPB/PAHP altimeter setting. When local altimeter setting not received, use HPB/PAHP altimeter setting and increase LNAV/VNAV DA to 352 feet; increase all MDAs 60 feet and LNAV visibility Cat C/D 1/2 SM and Circling visibility Cat D 1/2 SM.

MISSED APPROACH: Climb to 500, then climbing left turn to 3000 direct PEYKI and hold.

AWOS-3P 120.625	ANCHORAGE CENTER 124.5	UNICOM 122.8	CTAF 123.0
---------------------------	----------------------------------	------------------------	----------------------



CATEGORY	A	B	C	D
LNAV/VNAV DA		311-1	250 (300-1)	
LNAV MDA		420-1	359 (400-1)	
CIRCLING	520-1	459 (500-1)	520-1½ 459 (500-1½)	700-2 639 (700-2)



AK, 19 MAR 2026 to 14 MAY 2026

AK, 19 MAR 2026 to 14 MAY 2026