

APP CRS	Rwy Idg	<b>3903</b>
<b>177°</b>	TDZE	<b>413</b>
	Apt Elev	<b>413</b>

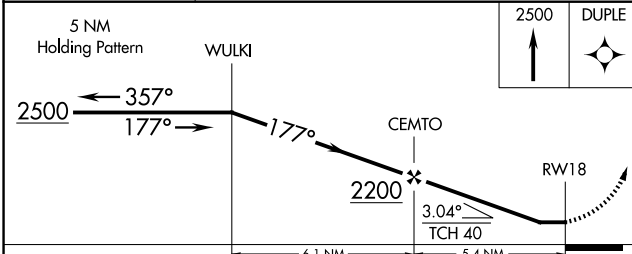
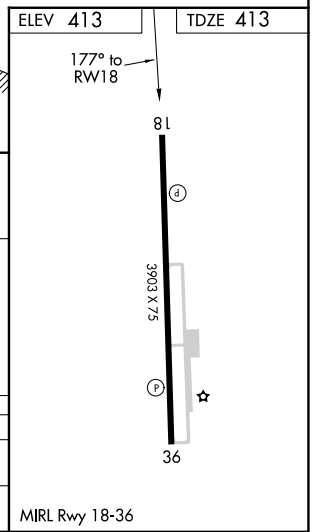
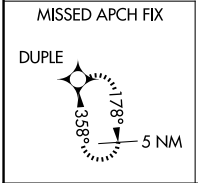
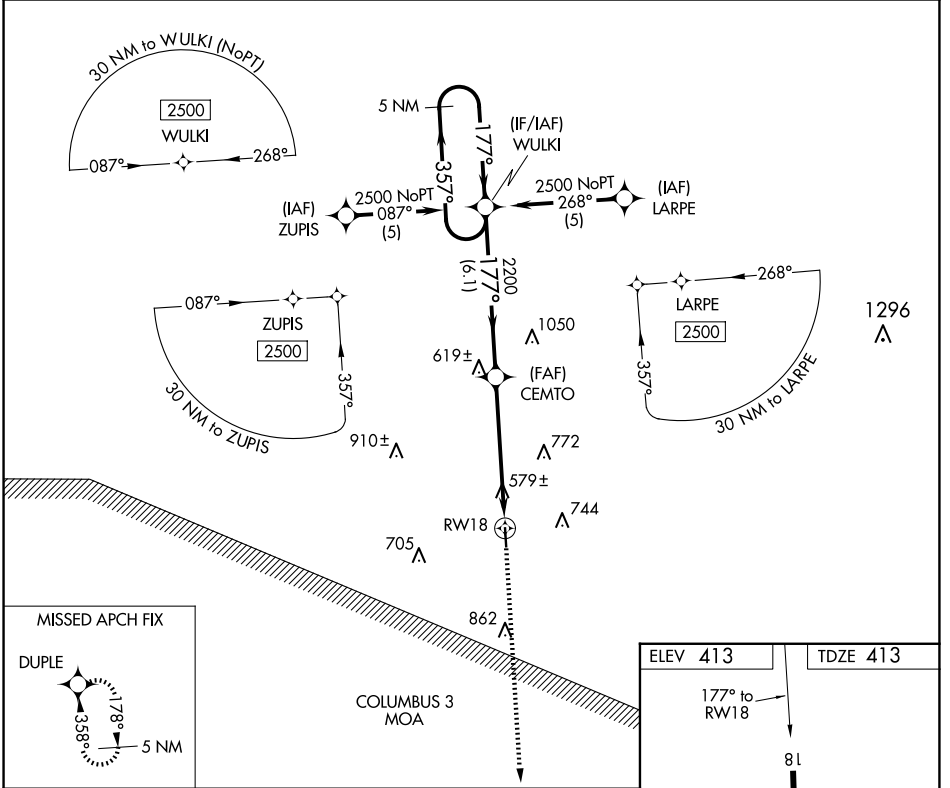
# RNAV (GPS) RWY 18

NEW ALBANY/UNION COUNTY (M72)

**▽** Use Tupelo altimeter setting, if not received, use Oxford altimeter setting and increase all MDA 20 feet and visibility Circling Cat C ¼ SM. Procedure NA at night. DME/DME RNP-0.3 NA. Visibility reduction by helicopters NA.

**▲ NA** MISSED APPROACH: Climb to 2500 direct DUPLX and hold.

TUP ASOS <b>133.525</b>	MEMPHIS CENTER <b>135.9 273.55</b>	UNICOM <b>122.8</b> (CTAF)
----------------------------	---------------------------------------	-------------------------------



CATEGORY	A	B	C	D
RNAV MDA	900-1	487 (500-1)	900-1¼ 487 (500-1¼)	NA
CIRCLING	940-1	527 (600-1)	1140-2 727 (800-2)	NA

MIRL Rwy 18-36

SC-4, 19 MAR 2026 to 16 APR 2026

SC-4, 19 MAR 2026 to 16 APR 2026