

LOC/DME I-SUZ 111.95 Chan 56(Y)	APP CRS 019°	Rwy Ldg 5002
		TDZE 389
		Apt Elev 389

ILS or LOC RWY 2

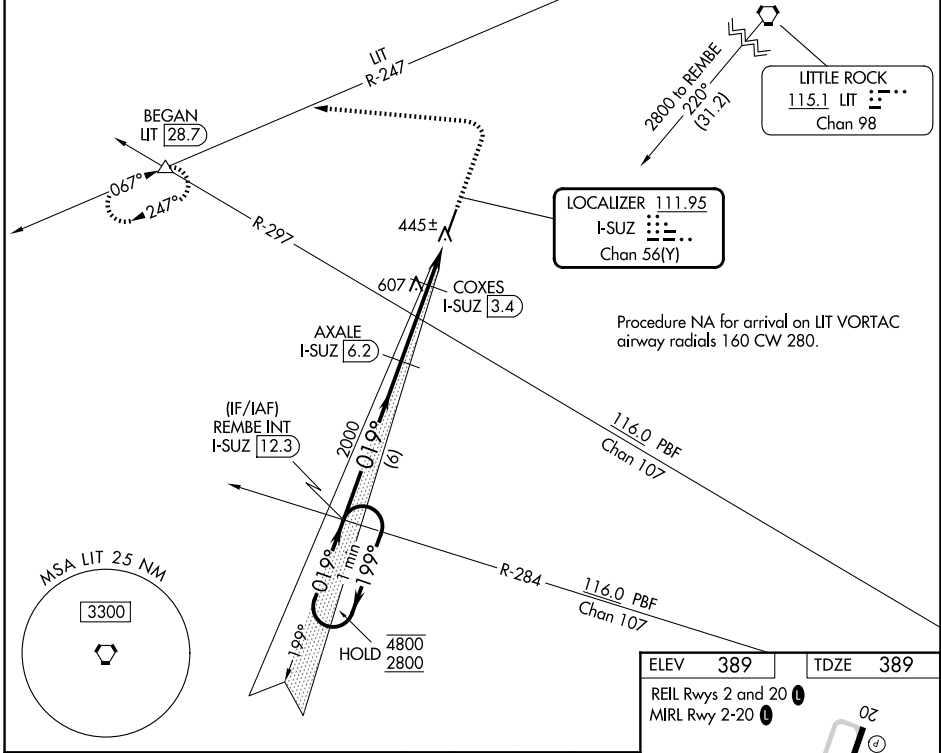
SALINE COUNTY RGNL (SUZ)

DME required for LOC only.

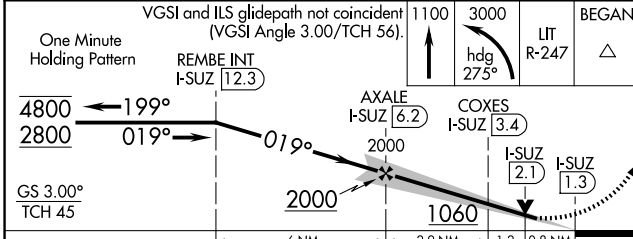
▲ Rwy 2 helicopter visibility reduction below 3/4 SM NA.

MISSED APPROACH: Climb to 1100 then climbing left turn to 3000 on heading 275° and LIT VORTAC R-247 to BEGAN INT/LIT 28.7 DME and hold, continue climb-in-hold to 3000.

AWOS-3 132.125	LITTLE ROCK APP CON 119.5 306.2	UNICOM 122.8 (CTAF) 0
--------------------------	---	---------------------------------



Procedure NA for arrival on LIT VORTAC
airway radials 160 CW 280.



ELEV 389	TDZE 389
REIL Rwys 2 and 20	
MIRL Rwy 2-20	
FAF to MAP 4.9 NM	
Knots	60 90 120 150 180
Min:Sec	4:54 3:16 2:27 1:58 1:38

CATEGORY	A	B	C	D
S-ILS 2		639-3/4	250 (300-3/4)	
S-LOC 2	700-1	311 (400-1)	700-7/8	311 (400-7/8)
CIRCLING	980-1 591 (600-1)	1080-1 691 (700-1)	1200-2 1/2 811 (900-2 1/2)	1200-2 3/4 811 (900-2 3/4)

SC-1, 19 MAR 2026 to 16 APR 2026

SC-1, 19 MAR 2026 to 16 APR 2026