

WAAS CH <b>58209</b> <b>W02A</b>	APP CRS <b>019°</b>	Rwy Ldg <b>5002</b> TDZE <b>389</b> Apt Elev <b>389</b>
--	------------------------	---

# RNAV (GPS) RWY 2

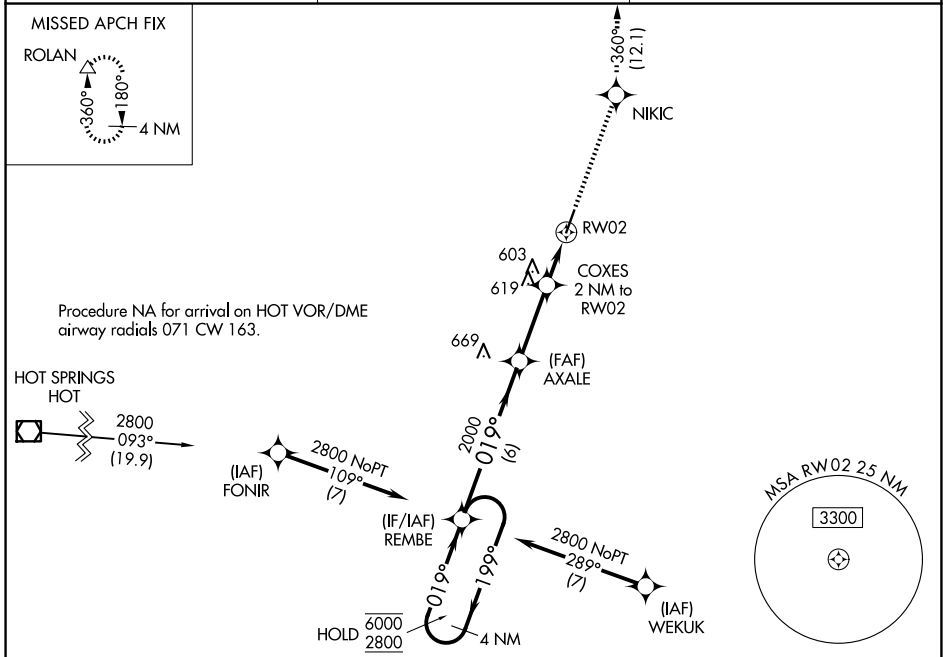
SALINE COUNTY RGNL (SUZ)

RNP APCH - GPS.

**▼** Rwy 2 helicopter visibility reduction below 3/4 SM NA.  
**▲** For uncompensated Baro-VNAV systems, LNAV/VNAV NA below -15°C or above 54°C.

MISSED APPROACH: Climb to 3500 direct NIKIC and track 360° to ROLAN and hold.

AWOS-3 <b>132.125</b>	LITTLE ROCK APP CON <b>119.5 306.2</b>	UNICOM <b>122.8 (CTAF) ①</b>
--------------------------	---	---------------------------------



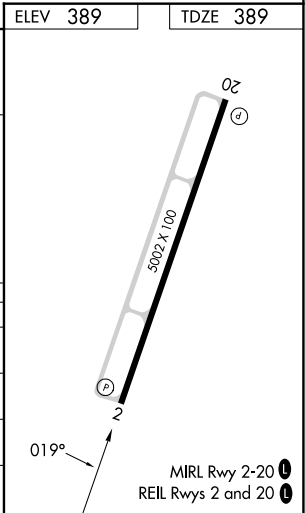
ELEV 389	TDZE 389
----------	----------

VGSI and RNAV glidepath not coincident (VGSI Angle 3.00/TCH 56).

4 NM Holding Pattern REMBE

6000	← 199°	AXALE 2000	COXES 2 NM to RW02	NIKIC	ROLAN tr 360°
2800	→ 019°	2000	1.2 NM to RW02		
		1080			
		6 NM	2.9 NM	0.9 NM	1.2 NM

CATEGORY	A	B	C	D
LPV DA		639-3/4	250 (300-3/4)	
LNAV/VNAV DA		680-7/8	291 (300-7/8)	
LNAV MDA	820-1	431 (500-1)	820-1 1/4	431 (500-1 1/4)
CIRCLING	980-1 591 (600-1)	1080-1 691 (700-1)	1200-2 1/2 811 (900-2 1/2)	1200-2 3/4 811 (900-2 3/4)



SC-1, 19 MAR 2026 to 16 APR 2026

SC-1, 19 MAR 2026 to 16 APR 2026