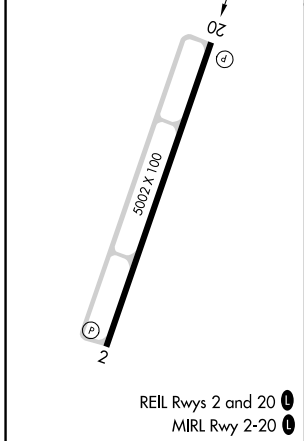
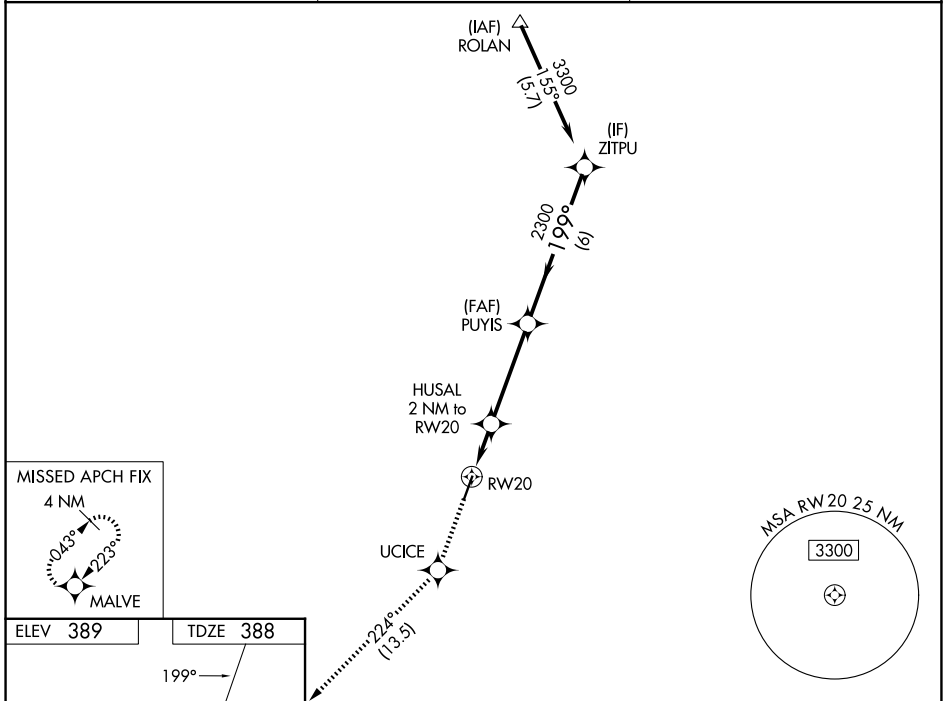


WAAS CH <b>40309</b> <b>W20A</b>	APP CRS <b>199°</b>	Rwy Ldg <b>5002</b> TDZE <b>388</b> Apt Elev <b>389</b>
--	------------------------	---

# RNAV (GPS) RWY 20

SALINE COUNTY RGNL (SUZ)

RNP APCH - GPS.		MISSED APPROACH: Climb to 2100 direct UCICE and on track 224° to MALVE and hold.
<p><b>⚠</b> Rwy 20 helicopter visibility reduction below ¾ SM NA. For uncompensated Baro-VNAV systems, LNAV/VNAV NA below -15°C and above 54°C.</p>		
AWOS-3 <b>132.125</b>	LITTLE ROCK APP CON <b>119.5 306.2</b>	UNICOM <b>122.8</b> (CTAF) <b>0</b>



2100	UCICE	tr 224°	MALVE	ZITPU
				3300
		HUSAL 2 NM to RW20	PUYIS 2300	
		1.4 NM to RW20		
				199°
				2300
				GP 3.00°
				TCH 60
		1.4 NM	0.6 NM	3.8 NM
				6 NM
CATEGORY	A	B	C	D
LPV DA		642-¾	254 (300-¾)	
LNAV/VNAV DA		850-1⅜	462 (500-1⅜)	
LNAV MDA	900-1	512 (600-1)	900-1⅜	512 (600-1⅜)
CIRCLING	980-1 591 (600-1)	1080-1 691 (700-1)	1200-2½ 811 (900-2½)	1200-2¾ 811 (900-2¾)

SC-1, 19 MAR 2026 to 16 APR 2026

SC-1, 19 MAR 2026 to 16 APR 2026