

APP CRS	Rwy Ldg	3700
188°	TDZE	1762
	Apt Elev	1774

RNAV (GPS) RWY 19

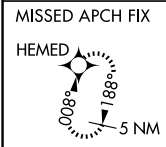
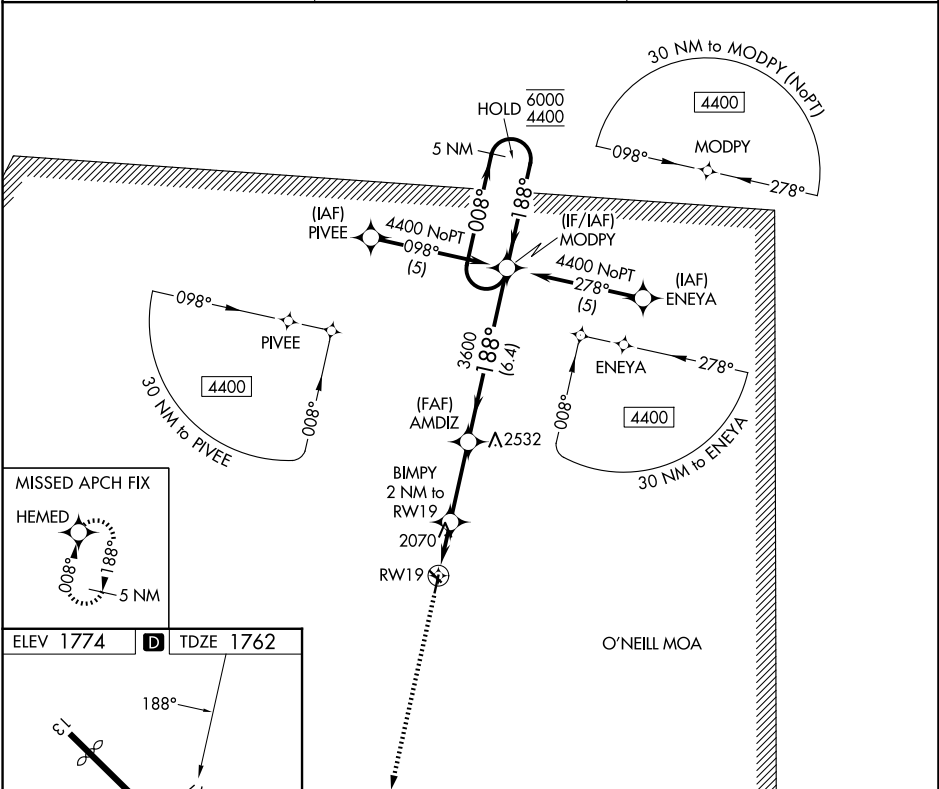
ANTELOPE COUNTY (4V9)

RNP APCH - GPS.

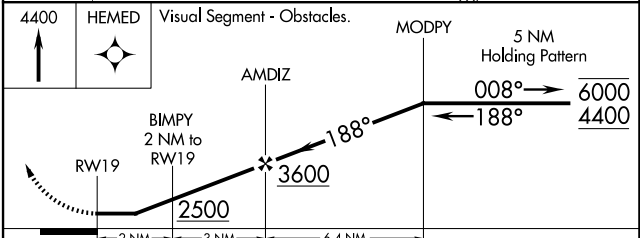
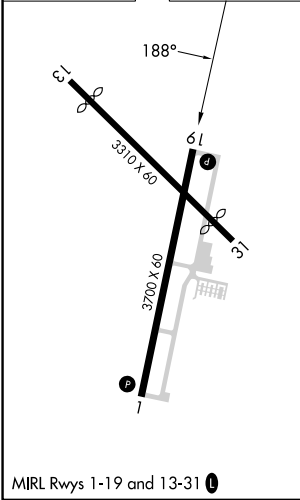
⚠ Circling to Rwy 13, 31 NA at night. Rwy 19 helicopter visibility reduction below 3/4 SM NA. When local altimeter setting not received, use BVN altimeter setting and increase all MDAs 60 feet.

⚠ MISSED APPROACH: Climb to 4400 direct HEMED and hold.

AWOS-3PT 119.275	MINNEAPOLIS CENTER 128.0 257.95	UNICOM 122.8 (CTAF) 0
----------------------------	---	---------------------------------



ELEV 1774	D	TDZE 1762
-----------	----------	-----------



CATEGORY	A	B	C	D
LNAV MDA	2320-1	558 (600-1)	NA	
CIRCLING	2320-1 546 (600-1)	2380-1 606 (700-1)	NA	

NC-2, 19 MAR 2026 to 16 APR 2026

NC-2, 19 MAR 2026 to 16 APR 2026