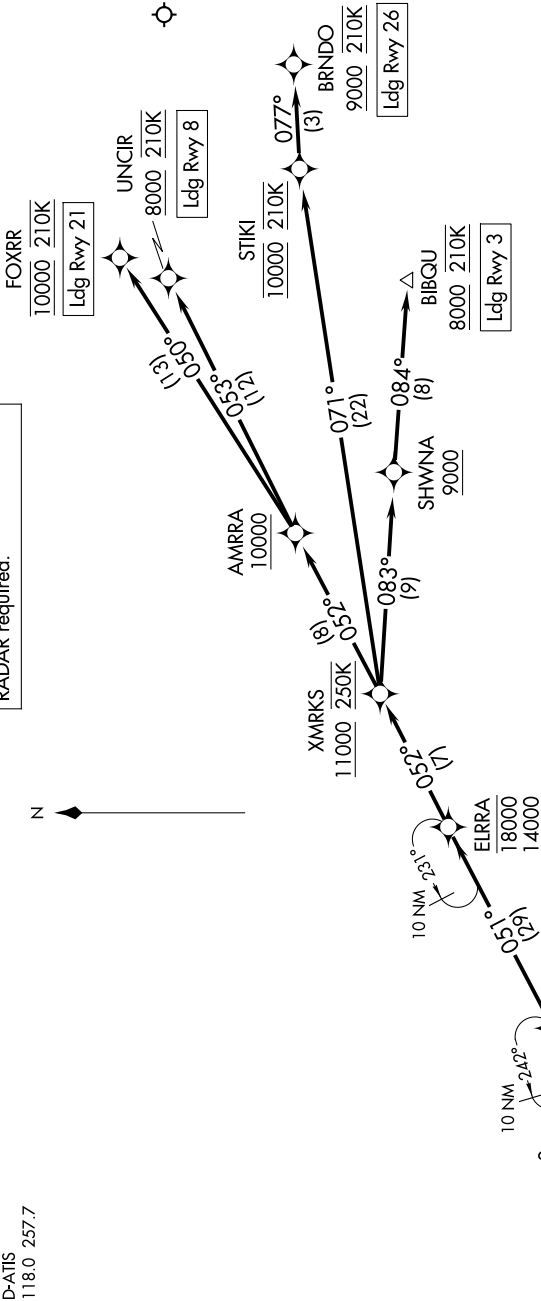


SW-1, 16 APR 2026 to 14 MAY 2026

ALBUQUERQUE APP CON
123.9 354.1
D-ATIS
118.0 257.7

RNAV 1-DME/DME/IRU or GPS
RADAR required.



CAUTION: Glider activity sunrise to sunset; 30 to 50 miles east of KABQ; 17500 feet MSL and below.

- NOTE: Turbojet aircraft only.
- NOTE: KALSE transition: For non-GPS equipped aircraft, ABQ DME must be operational.
- NOTE: TMALE transition: For non-GPS equipped aircraft, ABQ DME must be operational.
- NOTE: Landing Rwy 3, expect RADAR vectors prior to BIBQU.
- NOTE: Landing Rwy 8, expect RADAR vectors prior to UNCIR.
- NOTE: Landing Rwy 21, expect RADAR vectors prior to FOXR.
- NOTE: Landing Rwy 26, expect RADAR vectors prior to BRNDO.

NOTE: Chart not to scale.

(NARRATIVE ON FOLLOWING PAGE)

SW-1, 16 APR 2026 to 14 MAY 2026