

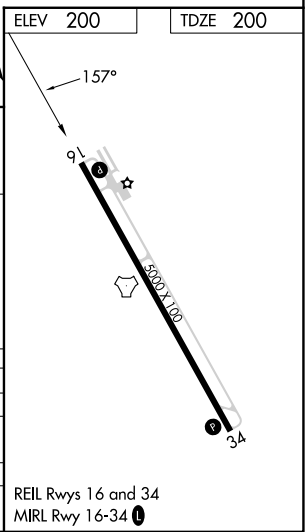
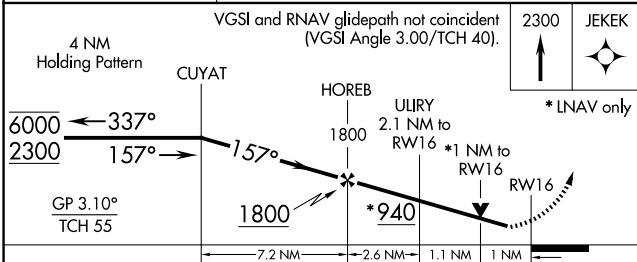
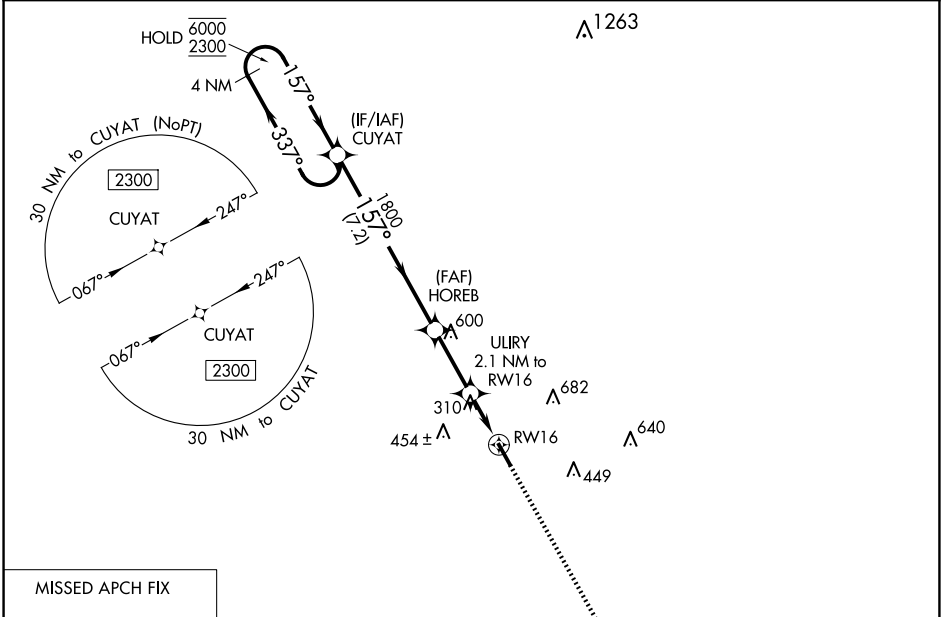
WAAS CH 45537 W16A	APP CRS 157°	Rwy Idg TDZE Apt Elev	5000 200 200
--	------------------------	-----------------------------	---

RNAV (GPS) RWY 16

BACON COUNTY (AMG)

RNP APCH.
 ▼ Rwy 16 helicopter visibility reduction below 3/4 SM NA.
 ▲ For uncompensated Baro-VNAV systems, LNAV/VNAV NA below -4°C or above 54°C.
 MISSED APPROACH: Climb to 2300 direct to JEKEK and hold.

ASOS 118.325	JACKSONVILLE CENTER 127.575 269.025	UNICOM 122.7 (CTAF) 1
------------------------	---	---------------------------------



CATEGORY	A	B	C	D
LPV DA		461-7/8	261 (300-7/8)	
LNAV/VNAV DA		468-7/8	268 (300-7/8)	
LNAV MDA		560-1	360 (400-1)	
◻ CIRCLING	720-1	520 (600-1)	1000-2 1/4 800 (800-2 1/4)	1000-2 1/2 800 (800-2 1/2)

SE-4, 16 APR 2026 to 14 MAY 2026

SE-4, 16 APR 2026 to 14 MAY 2026