

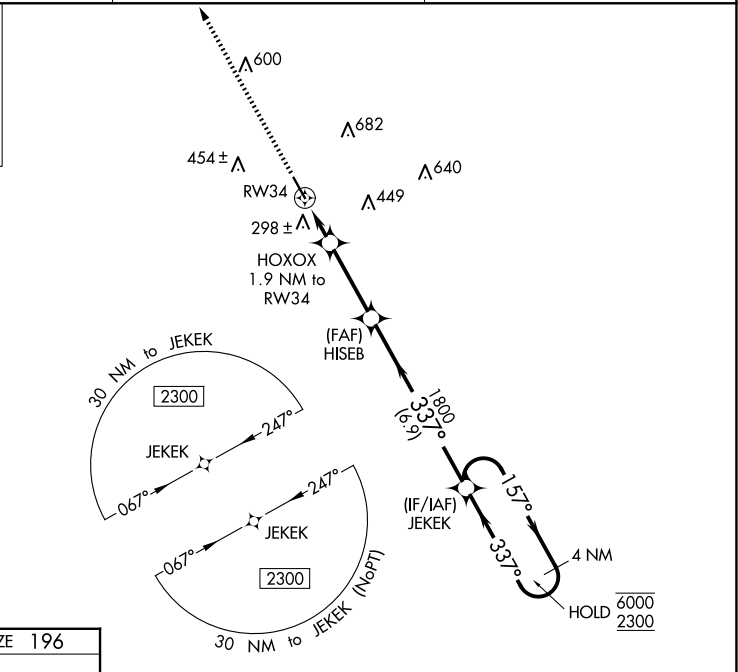
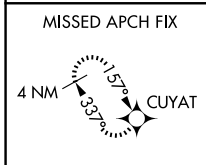
WAAS CH 70635 W34A	APP CRS 337°	Rwy Idg TDZE Apt Elev	5000 196 200
--	------------------------	-----------------------------	---

RNAV (GPS) RWY 34

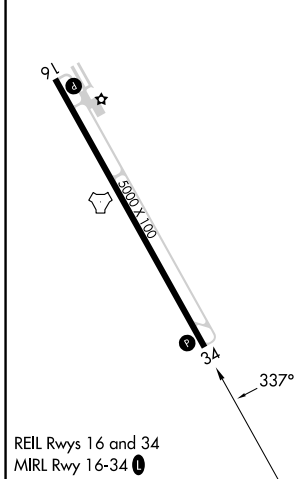
BACON COUNTY (A.M.G)

RNP APCH-GPS.	MISSED APPROACH: Climb to 2300 direct CUYAT and hold.
<p>▼ Rwy 34 helicopter visibility reduction below ¼ SM NA. ▲ For uncompensated Baro-VNAV systems, LNAV/VNAV NA below -4°C or above 54°C.</p>	

ASOS 118.325	JACKSONVILLE CENTER 127.575 269.025	UNICOM 122.7 (CTAF) 1
------------------------	---	---------------------------------



ELEV 200	TDZE 196
----------	----------



2300	CUYAT	VGSI and RNAV glidepath not coincident (VGSI Angle 3.00/TCH 30).				4 NM Holding Pattern
HOXOX 1.9 NM to RW34	HISEB 1800	JEKEK			6000	2300
1.1 NM to RW34	1800	337°	157°			GP 3.00° TCH 40
1.1	0.8	3.1 NM	6.9 NM			
CATEGORY	A	B	C	D		
LPV DA	452-7/8		256 (300-7/8)			
LNAV/VNAV DA	459-7/8		263 (300-7/8)			
LNAV MDA	560-1		364 (400-1)			
CIRCLING	720-1	520 (600-1)	1000-2 1/4 800 (800-2 1/4)	1000-2 1/2 800 (800-2 1/2)		