

GLAVN TWO ARRIVAL (RNAV) Transition Routes

ATLANTA, GEORGIA

SE-4, 16 APR 2026 to 14 MAY 2026

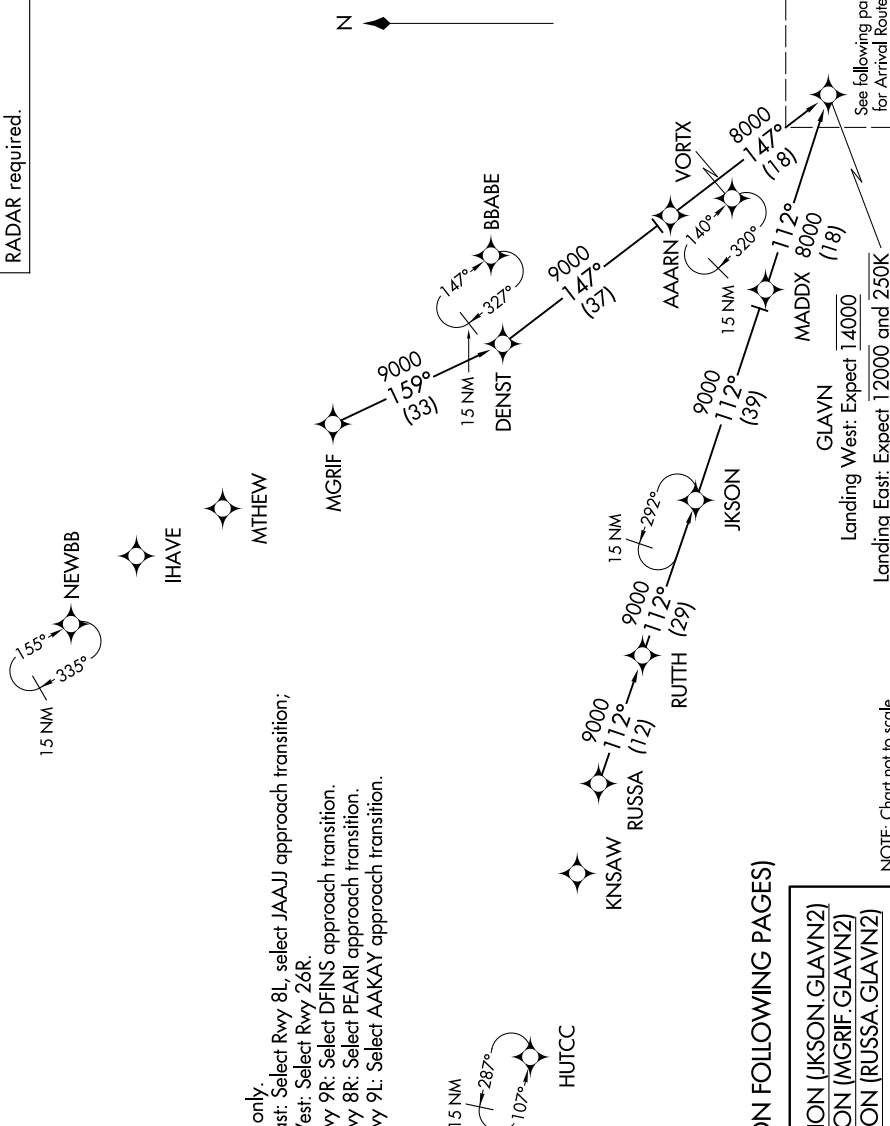
RNAV 1-DME/DME/IRU or GPS.
RADAR required.

ATLANTA APP CON
128.0 379.9
D-ATIS ARR
119.65

- NOTE: Jet aircraft only.
- NOTE: Landing East: Select Rwy 8L, select JAAJ approach transition; Landing West: Select Rwy 26R.
- NOTE: Landing Rwy 9R: Select DFINS approach transition.
- NOTE: Landing Rwy 8R: Select PEARL approach transition.
- NOTE: Landing Rwy 9L: Select AAKAY approach transition.

(CONTINUED ON FOLLOWING PAGES)

JKSON TRANSITION (JKSON.GLAVN2)
MGRIF TRANSITION (MGRIF.GLAVN2)
RUSSA TRANSITION (RUSSA.GLAVN2)



Landing West: Expect 14000
Landing East: Expect 12000 and 250K

See following page for Arrival Routes.

NOTE: Chart not to scale.

SE-4, 16 APR 2026 to 14 MAY 2026

GLAVN TWO ARRIVAL (RNAV) Transition Routes

ATLANTA, GEORGIA