

GNDLF THREE ARRIVAL (RNAV) Arrival Routes

SE-4, 16 APR 2026 to 14 MAY 2026

RNAV 1-DME/DME/IRU or GPS.
RADAR required.

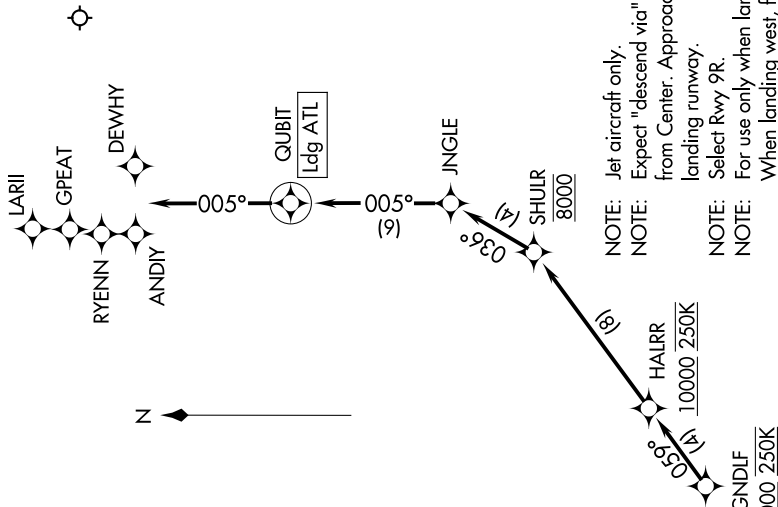
ARRIVAL ROUTE DESCRIPTION

- BEORN TRANSITION (BEORN.GNDLF3):
- COOUP TRANSITION (COOUP.GNDLF3):
- DRSDN TRANSITION (DRSDN.GNDLF3):
- ENNTT TRANSITION (ENNTT.GNDLF3):
- FRDDO TRANSITION (FRDDO.GNDLF3):
- GOLLM TRANSITION (GOLLM.GNDLF3):
- KHMYA TRANSITION (KHMYA.GNDLF3):
- ORRKK TRANSITION (ORRKK.GNDLF3):
- SHYRE TRANSITION (SHYRE.GNDLF3):
- STRDR TRANSITION (STRDR.GNDLF3):

From GNDLF on track 059° to cross HALRR at or above 10000 and at 250K, then on track 059° to cross SHULR at 8000, then on track 036° to JINGLE, then on track 005° to QUBIT, then on track 005°. Expect RADAR vectors to find approach course.

LOST COMMUNICATIONS:
ASSIGNED RUNWAY 10 or RUNWAY NOT ASSIGNED: Cross HALRR at or above 10000; cross SHULR at or above 10000; cross SHULR at 8000; cross QUBIT at 8000; cross QUBIT at 5000; after QUBIT descend to 3000 and proceed direct DEWHY; proceed on the ILS or RNAV Rwy 10 approach.
ASSIGNED RUNWAY 9L: Cross HALRR at or above 10000; cross SHULR at 8000; cross QUBIT at 6000; after QUBIT proceed direct RYENN and proceed on the ILS or RNAV Rwy 9L approach.
ASSIGNED RUNWAY 9R: Cross HALRR at or above 10000; cross SHULR at 8000; cross QUBIT at 6000; after QUBIT proceed direct ANDIY and proceed on the ILS or RNAV Rwy 9R approach.
ASSIGNED RUNWAY 8L: Cross HALRR at or above 10000; cross SHULR at 8000; cross QUBIT at 6000; after QUBIT proceed direct LARLI and proceed on the ILS or RNAV Rwy 8L approach.
ASSIGNED RUNWAY 8R: Cross HALRR at or above 10000; cross SHULR at 8000; cross QUBIT at 6000; after QUBIT proceed direct GPEAT and proceed on the ILS or RNAV Rwy 8R approach.

ATLANTA APP CON
127.9 379.9
D-AIS ARR
119.65



- NOTE: Jet aircraft only.
- NOTE: Expect "descend via" clearance from Center. Approach will assign landing runway.
- NOTE: Select Rwy 9R.
- NOTE: When landing west, file and expect the HOBTT (RNAV) ARRIVAL.
- NOTE: COOUP and KHMYA transitions, ATC assigned only.

SE-4, 16 APR 2026 to 14 MAY 2026