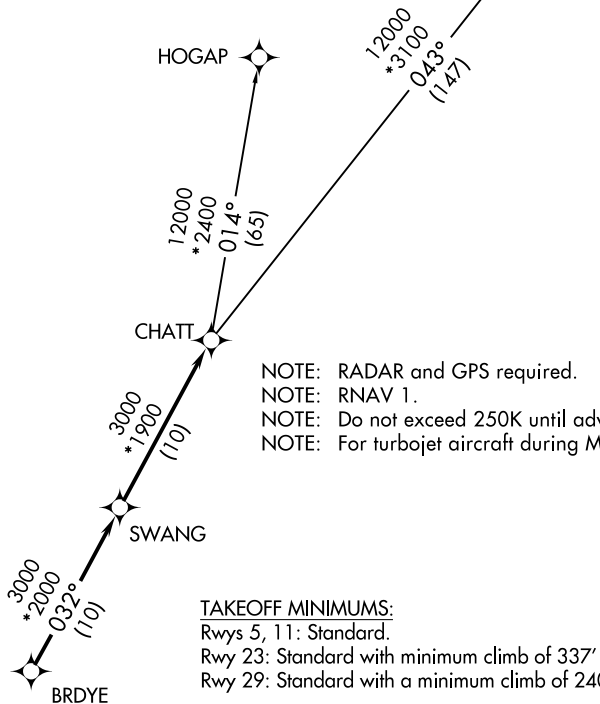


# CHATT SIX DEPARTURE (RNAV)

AUGUSTA DEP CON ★  
126.8 270.3  
CTAF  
123.05  
ASOS  
135.275

GREENSBORO  
GSO

**TOP ALTITUDE:  
ASSIGNED BY ATC**



- NOTE: RADAR and GPS required.
- NOTE: RNAV 1.
- NOTE: Do not exceed 250K until advised by ATC.
- NOTE: For turbojet aircraft during Masters golf tournament week.

TAKEOFF MINIMUMS:

- Rwys 5, 11: Standard.
- Rwy 23: Standard with minimum climb of 337' per NM to 1300.
- Rwy 29: Standard with a minimum climb of 240' per NM to 1300.



NOTE: Chart not to scale.

**DEPARTURE ROUTE DESCRIPTION**

TAKEOFF RUNWAYS 5, 11, 23, 29: Climb on assigned heading for RADAR vectors to BRDYE, then on depicted route to CHATT, thence. . . .

. . . .maintain altitude assigned by ATC. Expect clearance to filed altitude/flight level within 10 minutes after departure.

- GREENSBORO TRANSITION (CHATT6.GSO)
- HOGAP TRANSITION (CHATT6.HOGAP)

# CHATT SIX DEPARTURE (RNAV)

SE-4, 16 APR 2026 to 14 MAY 2026

SE-4, 16 APR 2026 to 14 MAY 2026