

(MISTY6.HADOC) 21168

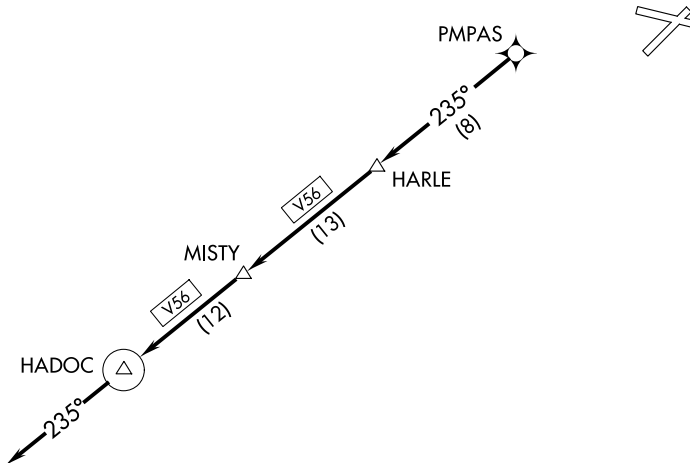
AL-28 (FAA)

DANIEL FLD (DNL)
AUGUSTA, GEORGIA

MISTY SIX DEPARTURE (RNAV)

AUGUSTA DEP CON ★
126.8 270.3
CTAF
123.05

**TOP ALTITUDE:
ASSIGNED BY ATC**



TAKEOFF MINIMUMS

Rwys 5, 11: Standard.

Rwy 23: Standard with minimum climb of 337' per NM to 1300.

Rwy 29: Standard with minimum climb of 240' per NM to 1300.

NOTE: RADAR and GPS required.

NOTE: RNAV 1.

NOTE: Do not exceed 250K until advised by ATC.

NOTE: For turbojet aircraft only.

NOTE: For use during Masters golf tournament week only.

NOTE: Chart not to scale.



DEPARTURE ROUTE DESCRIPTION

TAKEOFF RUNWAYS 5, 11, 23, 29: Climb on assigned heading for RADAR vectors to PMPAS. Then on depicted route to HADOC, then fly heading 235°, for RADAR vectors. Thence. . .

. . .maintain altitude assigned by ATC. Expect clearance to filed altitude/flight level within 10 minutes after departure.

MISTY SIX DEPARTURE (RNAV)
(MISTY6.HADOC) 19JUL18

AUGUSTA, GEORGIA
DANIEL FLD (DNL)

SE-4, 16 APR 2026 to 14 MAY 2026

SE-4, 16 APR 2026 to 14 MAY 2026