

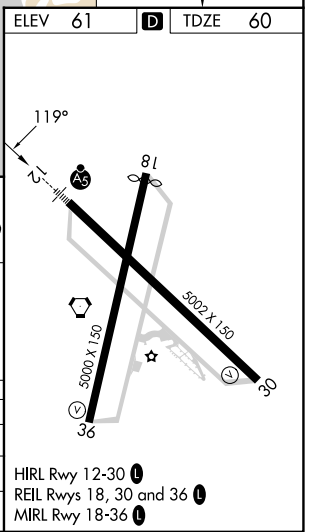
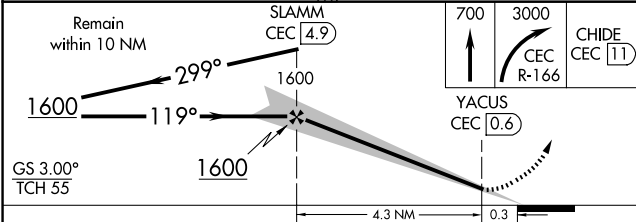
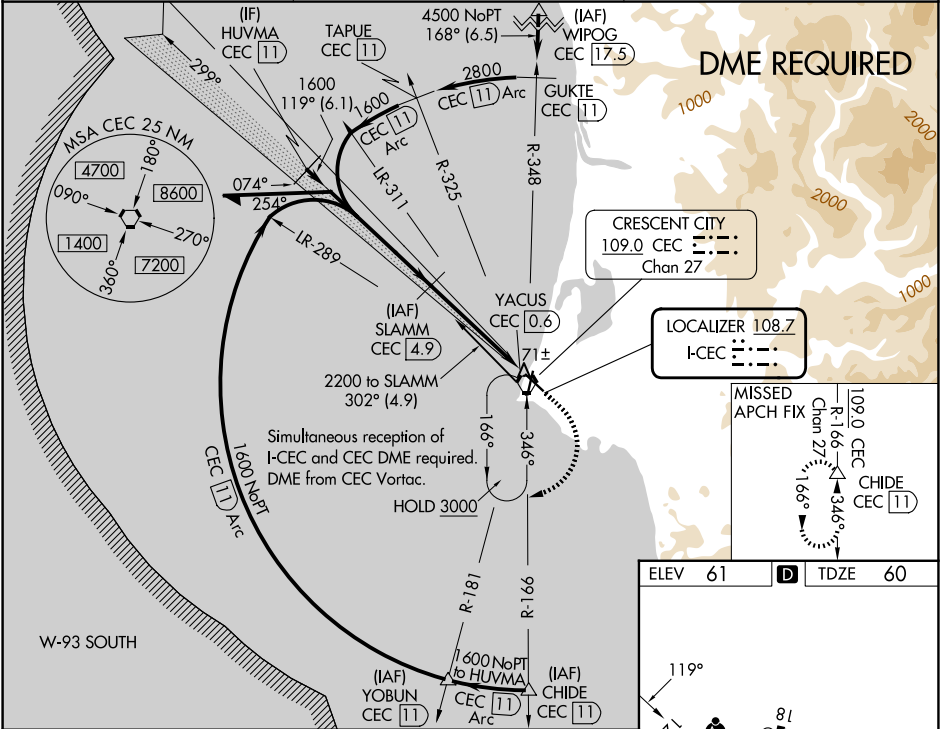
LOC I-CEC <b>108.7</b>	APP CRS <b>119°</b>	Rwy Ldg 5002
		TDZE 60
		Apt Elev 61

**ILS or LOC RWY 12**  
JACK MC NAMARA FLD (CEC)

**NA** DME required. S-ILS 12: ½ mile visibility authorized with use of FD or AP or HUD to DA. Inop table does not apply to S-ILS 12, except with use of FD or AP or HUD to DA. For inop MALS, increase S-LOC 12 all Cats visibility ¼ mile. When local altimeter setting not received, use Brookings altimeter setting and increase DA to 407 feet and all MDA 100 feet; increase S-LOC 12 Cat C/D, and Circling Cat D visibilities ¼ mile. For inop MALS, when using Brookings altimeter setting, increase S-ILS 12 all Cats visibility to 1 mile. Night Landing: Rwy 36 operational VGSi required, remain on or above VGSi glidepath until threshold. Circling to Rwy 18, 30 NA at night.

**MALS**  
MISSED APPROACH:  
Climb to 700 then climbing right turn to 3000 on CEC VORTAC R-166 to CHIDE/CEC 11 DME and hold, continue climb-in-hold to 3000.

ASOS <b>119.925</b>	SEATTLE CENTER <b>124.85 306.3</b>	UNICOM <b>122.8 (CTAF) 0</b>
------------------------	---------------------------------------	---------------------------------



CATEGORY	A	B	C	D
S-ILS 12		310-¾	250 (300-¾)	
S-LOC 12		380-¾	320 (400-¾)	
CIRCLING	540-1	479 (500-1)	640-1½ 579 (600-1½)	640-2 579 (600-2)

SW-2, 16 APR 2026 to 14 MAY 2026

SW-2, 16 APR 2026 to 14 MAY 2026