

WAAS CH <b>90310</b> <b>W12A</b>	APP CRS <b>119°</b>	Rwy Ldg TDZE Apt Elev	<b>5002</b> <b>60</b> <b>61</b>
--	------------------------	-----------------------------	---------------------------------------

# RNAV (GPS) RWY 12

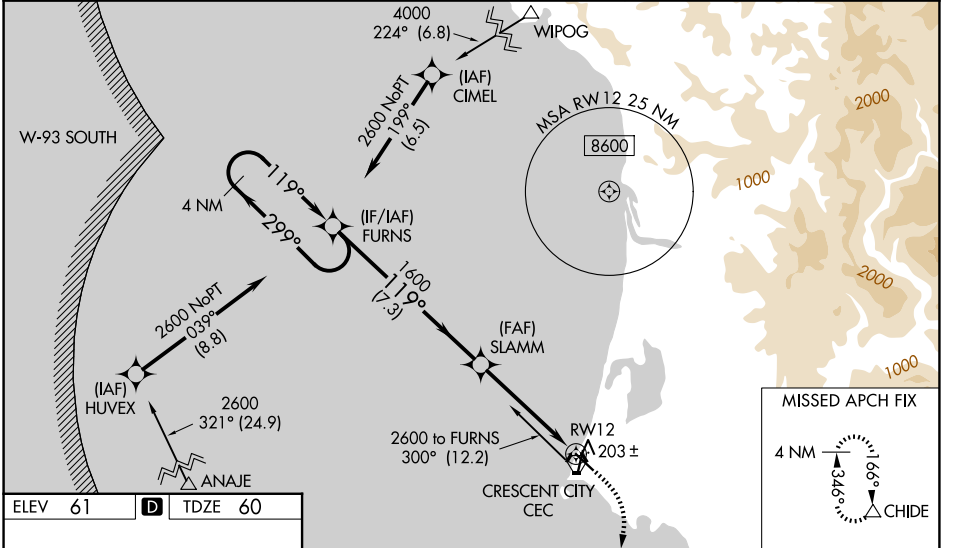
JACK MC NAMARA FLD (CEC)

**▽** Inop table does not apply to LPV all Cats. For uncompensated Baro-VNAV systems, LNAV/VNAV NA below 0°C (32°F) or above 54°C (130°F). DME/DME RNP-0.3 NA. When local altimeter setting not received, use Brookings altimeter setting and increase LPV DA to 407 feet, LNAV/VNAV DA to 484 feet and all MDA 100 feet; increase LPV all Cats visibility to ½ mile, LNAV/VNAV all Cats visibility to 1½ mile, LNAV Cat C/D to 1½ mile, and Circling Cat C to 2 miles, Cat D to 2½ miles. For inop MALS, increase LNAV/VNAV all Cats visibility to 1 mile and LNAV Cat A/B visibility to 1 mile, Cat C/D to 1½ mile. For inop MALS, when using Brookings altimeter setting, increase LPV all Cats visibility to 1½ mile, LNAV/VNAV all Cats visibility to 1¾ mile, and LNAV Cat A/B to 1 mile, Cat C/D to 1¾ mile. VDP and Baro-VNAV NA when using Brookings altimeter setting. Night landing: Rwy 18, 30 NA. Night landing: Rwy 36, operational VGSI required, remain on or above VGSI glidepath until threshold.

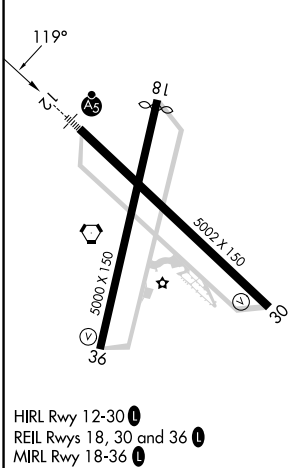
**MALS**

**MISSED APPROACH:**  
Climb to 600 then climbing right turn to 3000 direct CHIDE and hold, continue climb-in-hold to 3000.

ASOS <b>119.925</b>	SEATTLE CENTER <b>124.85 306.3</b>	UNICOM <b>122.8 (CTAF) ①</b>
------------------------	---------------------------------------	---------------------------------



ELEV 61	<b>D</b>	TDZE 60
---------	----------	---------



HIRL Rwy 12-30 ①  
REIL Rwys 18, 30 and 36 ①  
MIRL Rwy 18-36 ①

	4 NM Holding Pattern	FURNS	SLAMM	RWY 12
	2600	299°	119°	1600
	GP 3.00°	TCH 55	1600	*1.1 NM to RWY 12
			7.3 NM	3.6 NM
				1.1 NM
CATEGORY	A	B	C	D
LPV DA		310-¾	250 (300-¾)	
LNAV/VNAV DA		387-¾	327 (400-¾)	
LNAV MDA	460-¾	400 (400-¾)	460-⅞	400 (400-⅞)
CIRCLING	540-1	479 (500-1)	640-1½	640-2
			579 (600-1½)	579 (600-2)

SW-2, 16 APR 2026 to 14 MAY 2026

SW-2, 16 APR 2026 to 14 MAY 2026