

|            |         |          |      |
|------------|---------|----------|------|
| VORTAC CEC | APP CRS | Rwy Ldg  | 5002 |
| 109.0      | 131°    | TDZE     | 60   |
| Chan 27    |         | Apt Elev | 61   |

# VOR/DME RWY 12

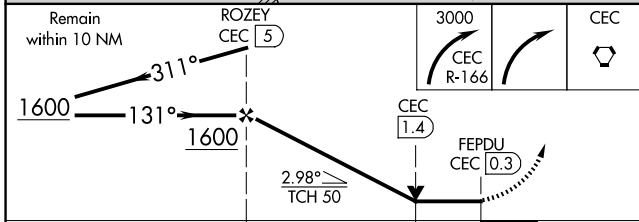
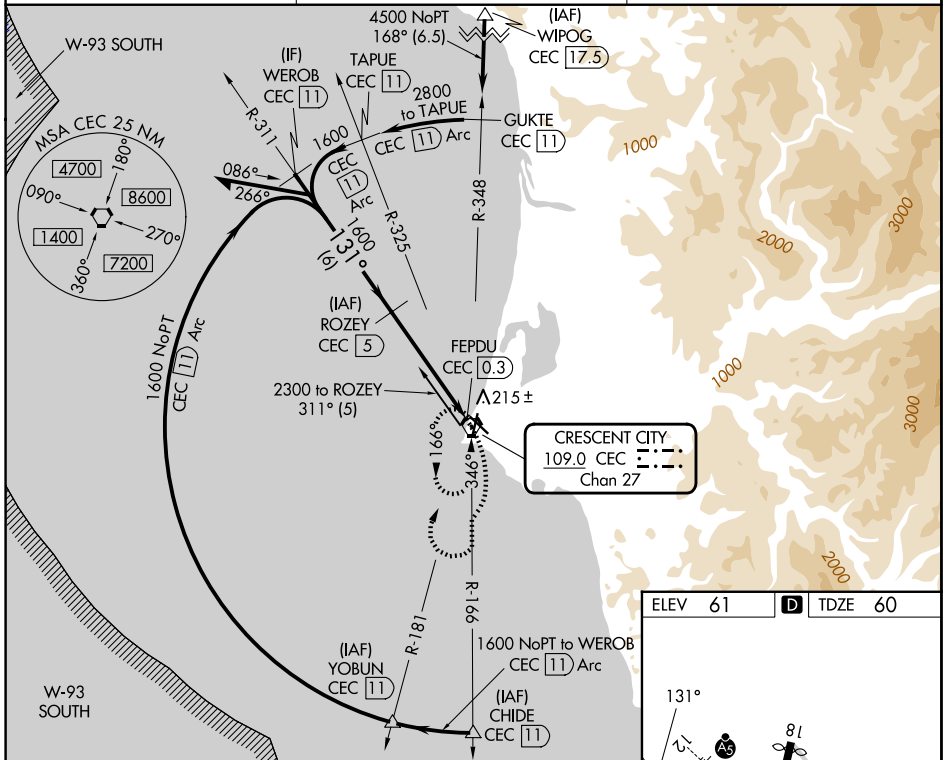
JACK MC NAMARA FLD (CEC)

**⚠** VDP NA with Brookings altimeter setting. When local altimeter setting not received, use Brookings altimeter setting and increase all MDA 100 feet; increase S-12 Cat C/D, and Circling Cat D visibility ¼ mile, and Circling Cat C visibility ½ mile. For inop MALSRS, increase S-12 Cats A/B visibility to 1 mile, Cats C/D visibility to 1½ mile. For inop MALSRS when using Brookings altimeter setting, increase S-12 Cats A/B visibility to 1 mile, Cats C/D visibility to 1½ mile. Night Landing: Rwy 18, 30 NA. Night Landing: Rwy 36 operational VGSI required, remain on or above VGSI glidepath until threshold.

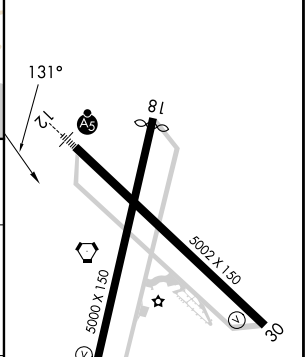
**MALSRS**

**MISSED APPROACH:**  
Climbing right turn to 3000 on CEC VORTAC R-166 then right turn direct CEC VORTAC and hold.

|                        |                                       |  |
|------------------------|---------------------------------------|--|
| ASOS<br><b>119.925</b> | SEATTLE CENTER<br><b>124.85 306.3</b> | UNICOM<br><b>122.8 (CTAF)</b> <b>1</b> |
|------------------------|---------------------------------------|--|



|         |                  |
|---------|------------------|
| ELEV 61 | <b>D</b> TDZE 60 |
|---------|------------------|



| CATEGORY | A     | B           | C                      | D                    |
|----------|-------|-------------|------------------------|----------------------|
| S-12     | 480-¾ | 420 (500-¾) | 480-1                  | 420 (500-1)          |
| CIRCLING | 540-1 | 479 (500-1) | 640-1½<br>579 (600-1½) | 640-2<br>579 (600-2) |

HIRL Rwy 12-30 **1**  
 REIL Rws 18, 30 and 36 **1**  
 MIRL Rwy 18-36 **1**

SW-2, 16 APR 2026 to 14 MAY 2026

SW-2, 16 APR 2026 to 14 MAY 2026