

OILDALE ONE DEPARTURE

AL-36 (FAA)

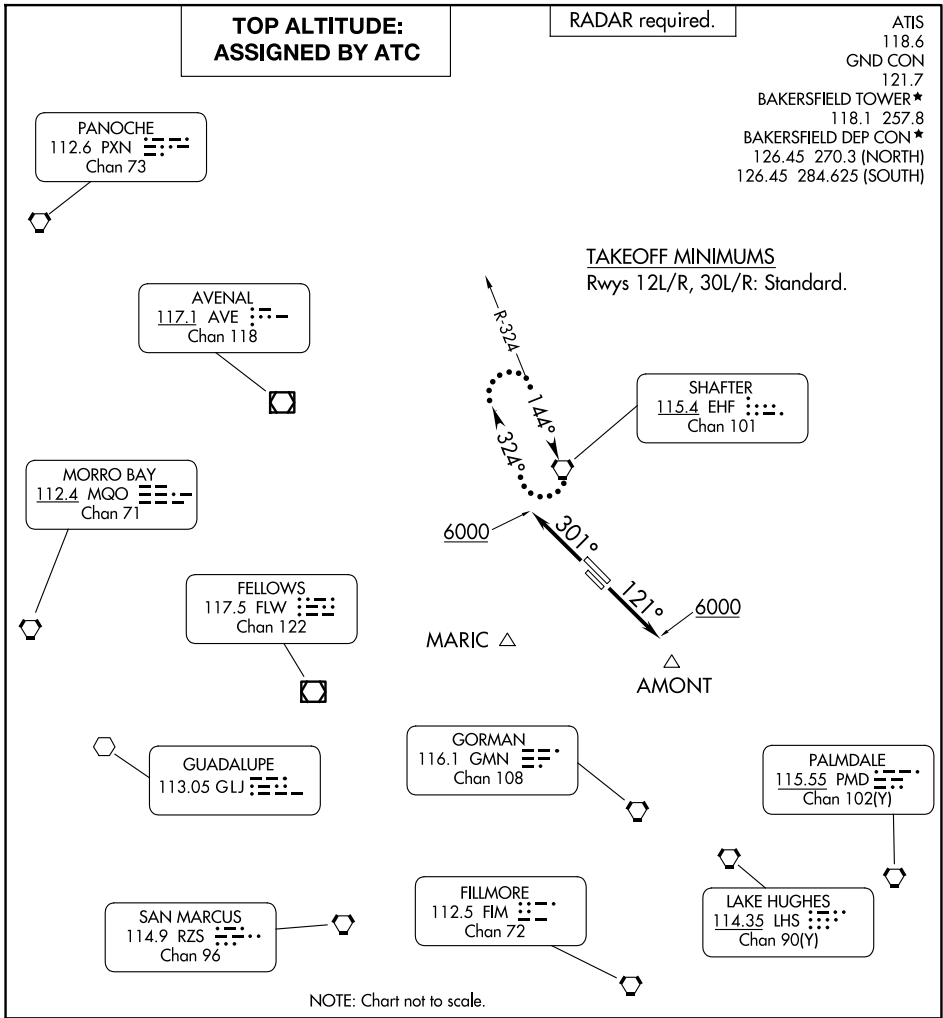
MEADOWS FLD (BFL)
BAKERSFIELD, CALIFORNIA

**TOP ALTITUDE:
ASSIGNED BY ATC**

RADAR required.

ATIS
118.6
GND CON
121.7
BAKERSFIELD TOWER★
118.1 257.8
BAKERSFIELD DEP CON★
126.45 270.3 (NORTH)
126.45 284.625 (SOUTH)

TAKEOFF MINIMUMS
Rwys 12L/R, 30L/R: Standard.



SW-3, 16 APR 2026 to 14 MAY 2026

SW-3, 16 APR 2026 to 14 MAY 2026



DEPARTURE ROUTE DESCRIPTION

TAKEOFF RUNWAYS 12L/R: Climb on heading 121° to 6000 for vector to assigned route/fix. Thence. . . .

TAKEOFF RUNWAYS 30L/R: Climb on heading 301° to 6000 for vector to assigned route/fix. Thence. . . .

. . . maintain ATC assigned altitude. Expect clearance to requested altitude five minutes after departure.

LOST COMMUNICATIONS: If no radio contact for two minutes, proceed direct SHAFTER VORTAC and hold. Climb in holding pattern to expected altitude prior to proceeding on course.

OILDALE ONE DEPARTURE