

WAAS CH 78418 W12A	APP CRS 121°	Rwy Ldg 10849 TDZE 510 Apt Elev 510
--	------------------------	--

RNAV (GPS) RWY 12L

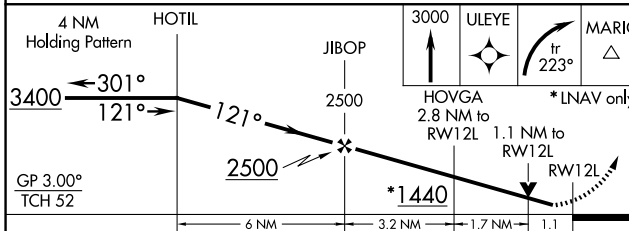
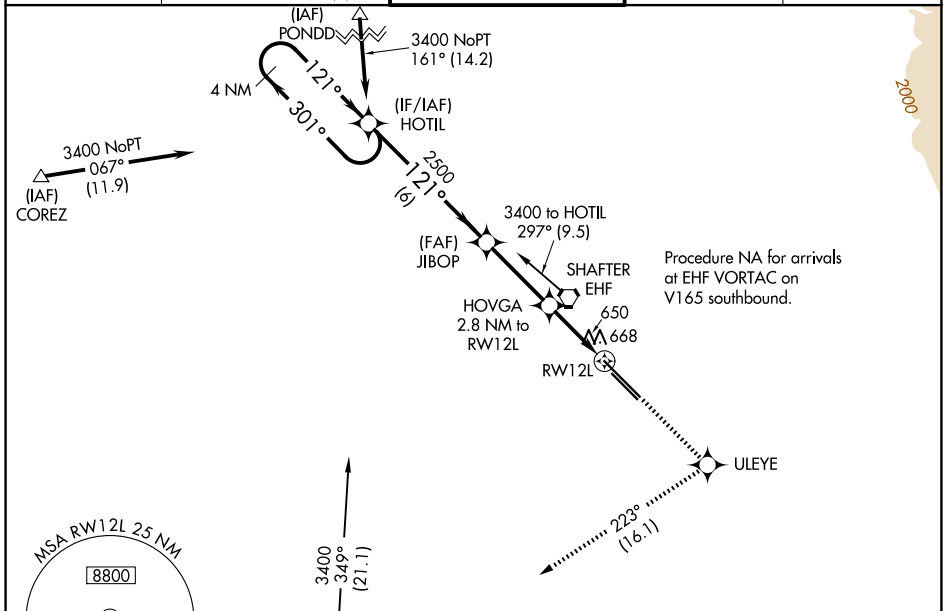
MEADOWS FLD (BFL)

RNP APCH.

⚠ Baro-VNAV NA when using Porterville altimeter setting. For uncompensated Baro-VNAV systems, LNAV/VNAV NA below -16°C or above 54°C. Rwy 12L helicopter visibility reduction below ¾ SM NA. When local altimeter setting not received, use Porterville altimeter setting and increase all DA 92 feet, all MDA 100 feet, increase LPV all Cats, LNAV/VNAV all Cats and LNAV Cats C/D visibility ¼ mile.

MISSED APPROACH: Climb to 3000 direct ULEYE and right turn on track 223° to MARIC and hold.

ATIS 118.6	BAKERSFIELD APP CON* 118.9 270.3 (N) 118.8 284.625 (S)	BAKERSFIELD TOWER* 118.1 (CTAF) 257.8	GND CON 121.7	UNICOM 122.95
----------------------	--	---	-------------------------	-------------------------



ELEV 510	TDZE 510
----------	----------

TDZ/CL Rwy 30R
HIRL Rwy 12L-30R
MIRL Rwy 12R-30L
REIL Rwy 12R and 30L

CATEGORY	A	B	C	D
LPV DA	760-1 250 (300-1)			
LNAV/VNAV DA	1073-2		563 (600-2)	
LNAV MDA	920-1 410 (500-1)		920-1¼ 410 (500-1¼)	

SW-3, 16 APR 2026 to 14 MAY 2026

SW-3, 16 APR 2026 to 14 MAY 2026