



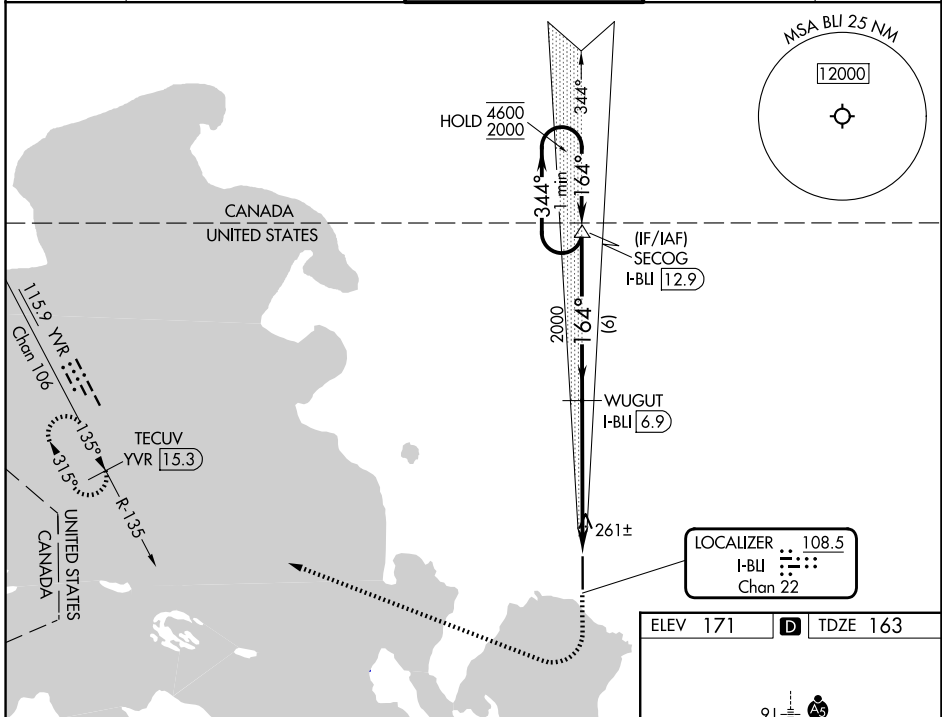
LOC/DME I-BLI 108.5 Chan 22	APP CRS 164°	Rwy Ldg TDZE Apt Elev 6700 163 171
---	------------------------	--

ILS RWY 16 (SA CAT I)

BELLINGHAM INTL (BLI)

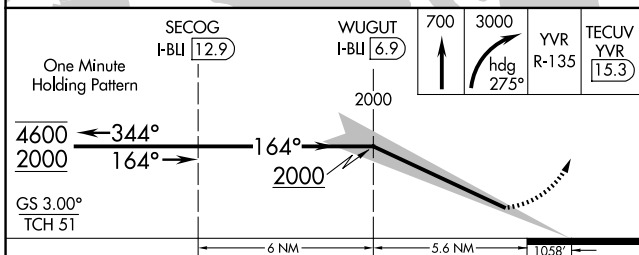
DME required.		MALSR	 MISSED APPROACH: Climb to 700 then climbing right turn to 3000 on heading 275° and on YVR VOR/DME R-135 to TECUV/YVR 15.3 DME and hold.
 Requires specific OPSPEC, MSPEC or LOA approval. Procedure NA when tower closed.			

ATIS 134.45	VICTORIA TERMINAL APP CON 132.7	BELLINGHAM TOWER ★ 124.9 (CTAF) 379.3	GND CON 127.4 379.3	UNICOM 122.95
-----------------------	---	--	-------------------------------	-------------------------



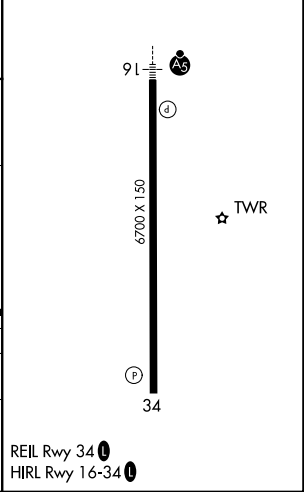
NW-1, 16 APR 2026 to 14 MAY 2026

NW-1, 16 APR 2026 to 14 MAY 2026



CATEGORY	A	B	C	D
S-ILS 16	RA 173/14		150 DA 313	

ELEV 171	D	TDZE 163
----------	----------	----------



SA CATEGORY I ILS-SPECIAL AIRCREW & AIRCRAFT CERTIFICATION REQUIRED