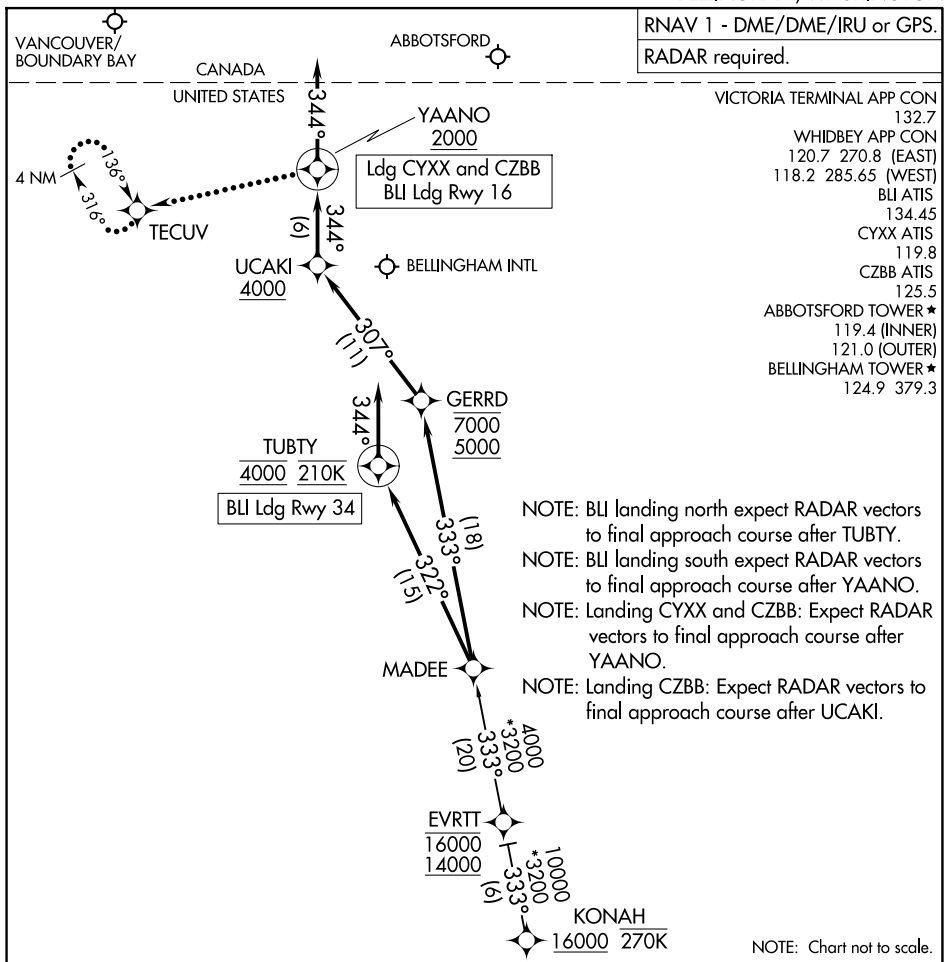


MADEE SIX ARRIVAL (RNAV)

AL-45 (FAA)

BELLINGHAM, WASHINGTON



NW-1, 16 APR 2026 to 14 MAY 2026

NW-1, 16 APR 2026 to 14 MAY 2026

ARRIVAL ROUTE DESCRIPTION

KONAH TRANSITION (KONAH.MADEE6)

LANDING BLI RUNWAY 16: From MADEE on track 333° to cross GERRD between 5000 and 7000, then on track 307° to cross UCAKI at or above 4000, then on track 344° to cross YAANO at or above 2000, then on track 344°. Expect RADAR vectors to final approach course.

LANDING BLI RUNWAY 34: From MADEE on track 322° to cross TUBTY at 4000 and at 210K, then on track 344°. Expect RNAV (RNP/GPS) RWY 34 approach or RADAR vectors to final approach course.

LANDING CZBB/CYXX: From MADEE on track 333° to cross GERRD between 5000 and 7000, then on track 307° to cross UCAKI at or above 4000, then on track 344° to cross YAANO at or above 2000, then on track 344°. Expect RADAR vectors to final approach course.

LOST COMMUNICATIONS

LANDING BLI RUNWAY 16: After UCAKI conduct RNAV (RNP) Z RWY 16 approach; if unable, proceed to YAANO maintain 2000 and proceed to TECUV and hold.

LANDING CYXX and CZBB: After YAANO maintain 2000 and proceed to TECUV and hold.

MADEE SIX ARRIVAL (RNAV)

BELLINGHAM, WASHINGTON