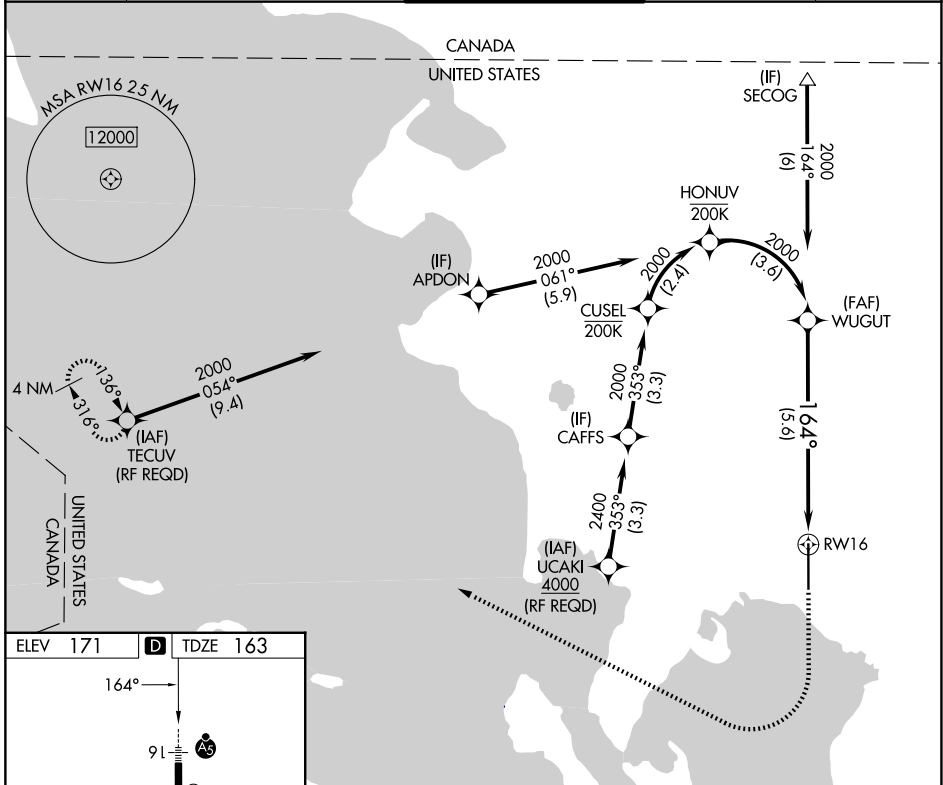


APP CRS	Rwy Ldg	6700
164°	TDZE	163
	Apt Elev	171

RNAV (RNP) Z RWY 16

BELLINGHAM INTL (BLI)

RNP AR APCH - GPS. Authorization required. From CUSUL, HONUUV: RF.		MALSR	MISSED APPROACH: Climb to 700 then climbing right turn to 2000 direct TECUV and hold.	
For uncompensated Baro-VNAV systems, procedure NA below -10°C or above 54°C.				
ATIS	VICTORIA TERMINAL APP CON	BELLINGHAM TOWER*	GND CON	UNICOM
134.45	132.7	124.9 (CTAF) 379.3	127.4 379.3	122.95



NW-1, 16 APR 2026 to 14 MAY 2026

NW-1, 16 APR 2026 to 14 MAY 2026

ELEV 171	D	TDZE 163
----------	----------	----------

REIL Rwy 34

HIRL Rwy 16-34

See planview for multiple IF locations.

WUGUT	700	2000	TECUV
2000			

164°

GP 3.00° TCH 51

5.6 NM

CATEGORY	A	B	C	D
RNP 0.30 DA	496/26 333 (400-½)			

AUTHORIZATION REQUIRED