

APP CRS	Rwy Ldg	6700
344°	TDZE	171
	Apt Elev	171

RNAV (RNP) Z RWY 34

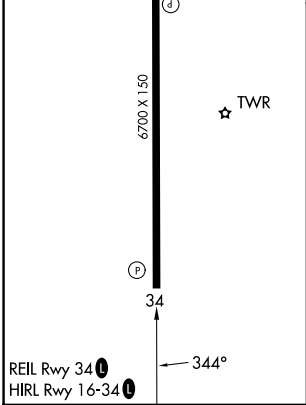
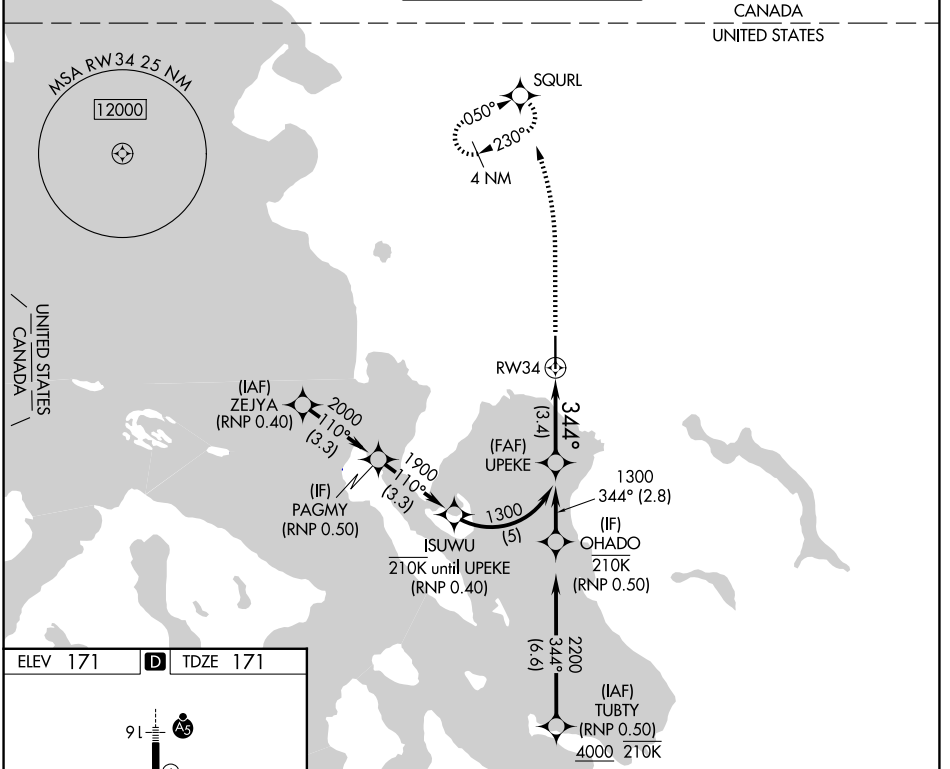
BELLINGHAM INTL (BLI)

RNP AR APCH - GPS. From PAGMY, OHADO: Min RNP 0.50.
 Authorization required. From ISUWU: RF, Min RNP 0.40.

⚠ For uncompensated Baro-VNAV systems, procedure NA below -10°C or above 54°C.

MISSED APPROACH: Climb to 700 then climbing left turn to 3000 direct SQURL and hold, continue climb in hold to 3000.

ATIS	VICTORIA TERMINAL APP CON	BELLINGHAM TOWER ★	GND CON	UNICOM
134.45	132.7	124.9 (CTAF) 0 379.3	127.4 379.3	122.95



ELEV 171	D	TDZE 171		
700	3000	SQURL	See planview for multiple IF locations.	UPEKE
CATEGORY	A	B	C	D
RNP 0.11 DA	444-7/8		273 (300-7%)	
RNP 0.30 DA	577-1/8		406 (500-1%)	
AUTHORIZATION REQUIRED				

NW-1, 16 APR 2026 to 14 MAY 2026

NW-1, 16 APR 2026 to 14 MAY 2026