

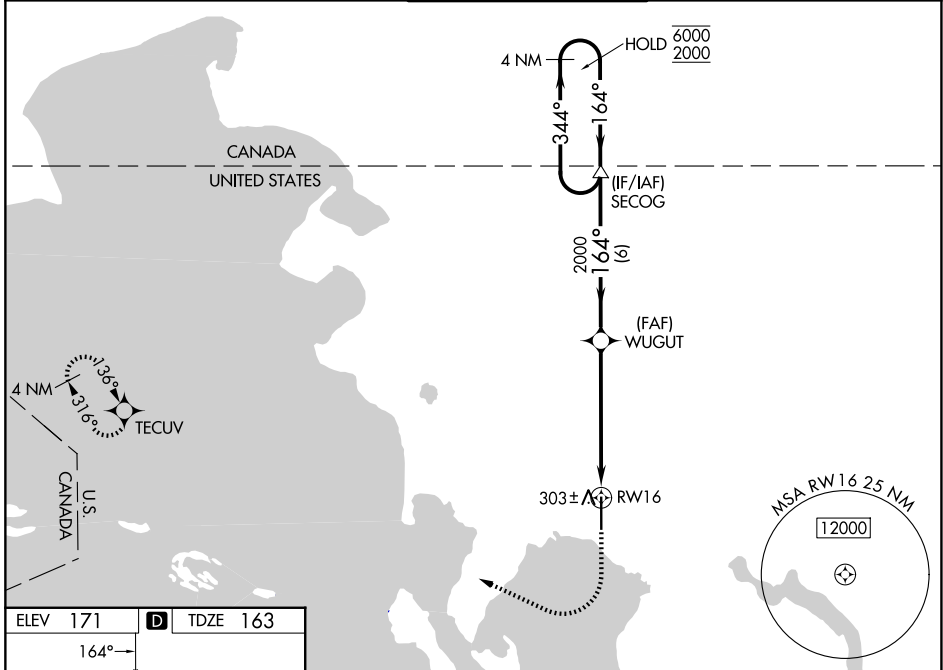
WAAS CH <b>45999</b>	APP CRS <b>164°</b>	Rwy Ldg TDZE <b>163</b>	<b>6700</b>
<b>W16A</b>		Apt Elev <b>171</b>	

# RNAV (GPS) Y RWY 16

BELLINGHAM INTL (BLI)

RNP APCH - GPS.		MALSR	MISSED APPROACH: Climb to 700 then climbing right turn to 2000 direct TECUV and hold.
⚠ For uncompensated Baro-VNAV systems, LNAV/VNAV NA below -10°C or above 54°C. *RVR 1800 authorized with use of FD or AP or HUD to DA.			

ATIS <b>134.45</b>	VICTORIA TERMINAL APP CON <b>132.7</b>	BELLINGHAM TOWER★ <b>124.9 (CTAF) 0 379.3</b>	GND CON <b>127.4 379.3</b>	UNICOM <b>122.95</b>
-----------------------	---	--	-------------------------------	-------------------------



NW-1, 16 APR 2026 to 14 MAY 2026

NW-1, 16 APR 2026 to 14 MAY 2026

ELEV 171	<b>D</b>	TDZE 163
----------	----------	----------

REIL Rwy 34 **0**  
HIRL Rwy 16-34 **0**

	4 NM Holding Pattern	SECOG	WUGUT	700	2000	TECUV
	6000 ← 344°	164° →	2000	↑	↷	⬠
	GP 3.00°	TCH 51	1.1 NM to RWY 16			
	6 NM	4.5 NM	1.1 NM			
CATEGORY	A	B	C	D		
LPV DA*	363/24		200 (200-½)			
LNAV/VNAV DA	486/26		323 (400-½)			
LNAV MDA	560/24	397 (400-½)	560/35	397 (400-¾)		
CIRCLING	640-1	469 (500-1)	860-2 689 (700-2)	1140-3 969 (1000-3)		