

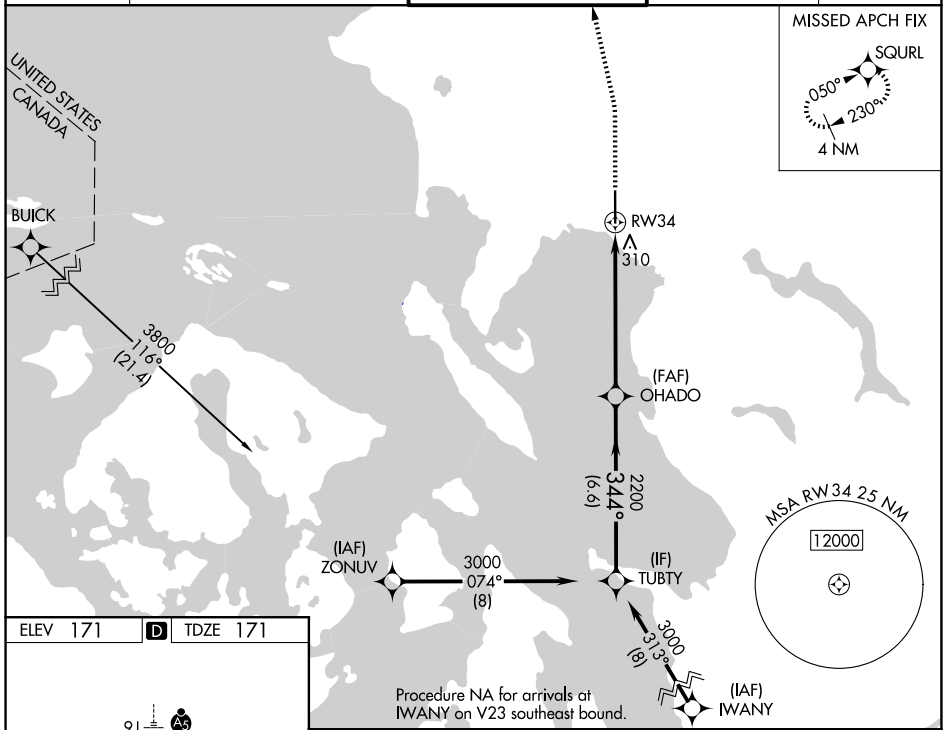
WAAS CH <b>86223</b> <b>W34A</b>	APP CRS <b>344°</b>	Rwy Ldg TDZE <b>171</b> Apt Elev <b>171</b>
--	------------------------	---

# RNAV (GPS) Y RWY 34

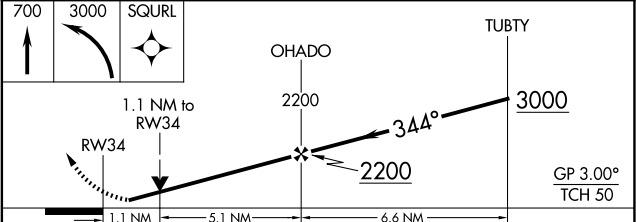
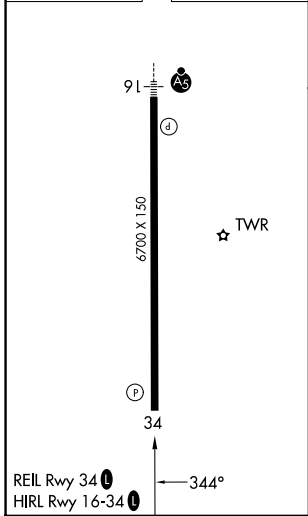
BELLINGHAM INTL (BLI)

RNP APCH - GPS.	MISSED APPROACH: Climb to 700 then climbing left turn to 3000 direct SQURL and hold, continue to climb in hold to 3000.
-----------------	---

ATIS <b>134.45</b>	VICTORIA TERMINAL APP CON <b>132.7</b>	BELLINGHAM TOWER ★ <b>124.9 (CTAF) 0 379.3</b>	GND CON <b>127.4 379.3</b>	UNICOM <b>122.95</b>
-----------------------	---	---	-------------------------------	-------------------------



ELEV 171	<b>D</b>	TDZE 171
----------	----------	----------



CATEGORY	A	B	C	D
LPV DA		421- <sup>3</sup> / <sub>4</sub>	250 (300- <sup>3</sup> / <sub>4</sub> )	
LNAV/VNAV DA		471- <sup>7</sup> / <sub>8</sub>	300 (300- <sup>7</sup> / <sub>8</sub> )	
LNAV MDA	580-1	409 (500-1)	580-1 <sup>1</sup> / <sub>8</sub>	409 (500-1 <sup>1</sup> / <sub>8</sub> )
CIRCLING	640-1	469 (500-1)	860-2 689 (700-2)	1140-3 969 (1000-3)

NW-1, 16 APR 2026 to 14 MAY 2026

NW-1, 16 APR 2026 to 14 MAY 2026