

GATEWAY ONE DEPARTURE

AL-46 (FAA)

SCOTT AFB/MIDAMERICA ST LOUIS (BLV)
BELLEVILLE, ILLINOIS

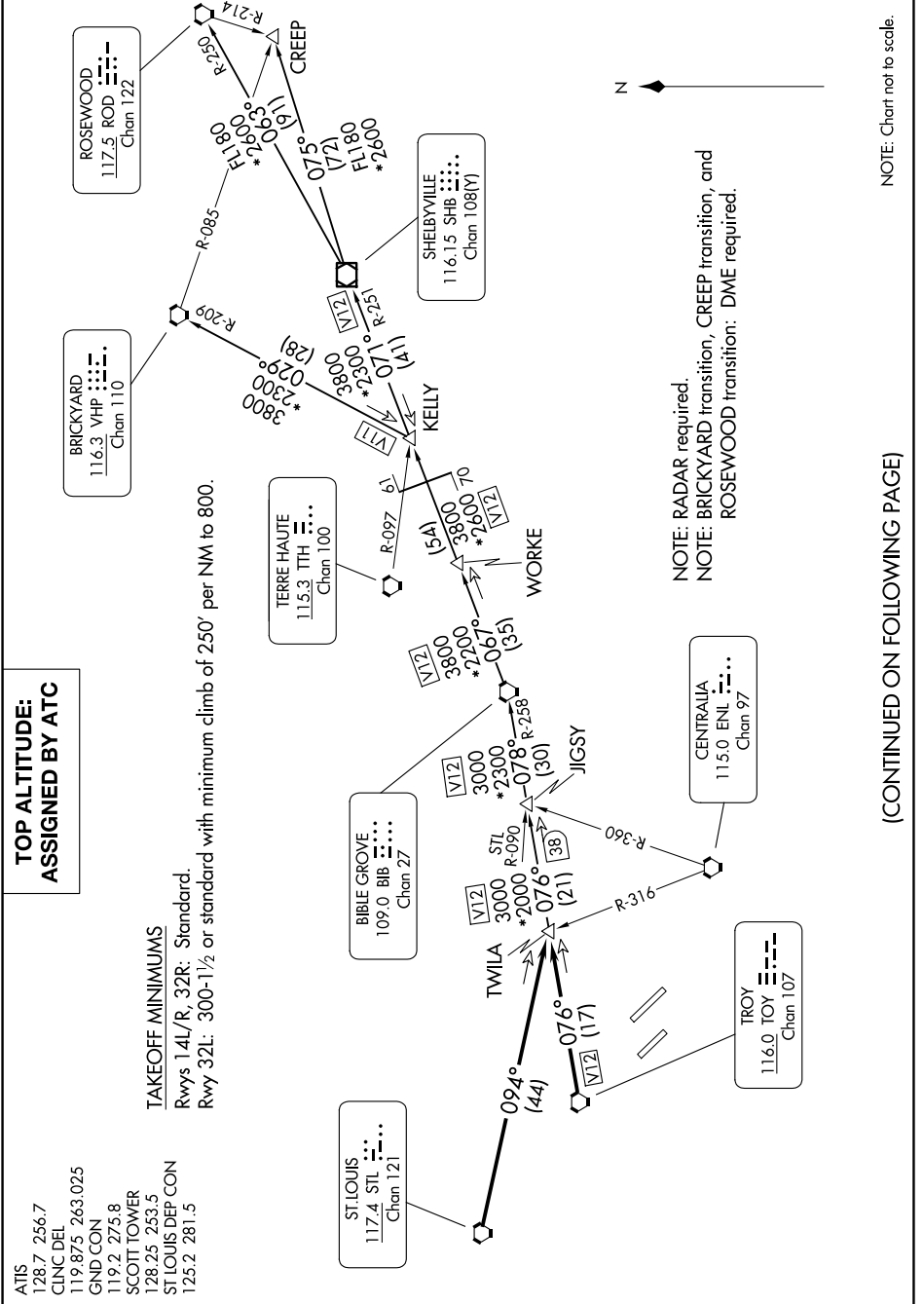
EC-3, 16 APR 2026 to 14 MAY 2026

TOP ALTITUDE: ASSIGNED BY ATC

ATIS 128.7 256.7
 CLNC DEL 119.875 263.025
 GND CON 119.2 275.8
 SCOTT TOWER 128.25 253.5
 ST LOUIS DEP CON 125.2 281.5

TAKEOFF MINIMUMS

Rwys 14L/R, 32R: Standard.
 Rwy 32L: 300-1½ or standard with minimum climb of 250' per NM to 800.



NOTE: RADAR required.
 NOTE: BRICKYARD transition, CREEP transition, and ROSEWOOD transition: DME required.

(CONTINUED ON FOLLOWING PAGE)

NOTE: Chart not to scale.

EC-3, 16 APR 2026 to 14 MAY 2026