

BLZZR SIX DEPARTURE (RNAV)

AL-58 (FAA)

BOSTON, MASSACHUSETTS

NE-1, 16 APR 2026 to 14 MAY 2026

BOSTON DEP CON
133.0
D-ATIS
135.0
CLNC DEL
121.65 257.8
CPDLC
GND CON
121.75 121.9
BOSTON TOWER
128.8 257.8 (WEST)
132.225 257.8 (EAST)

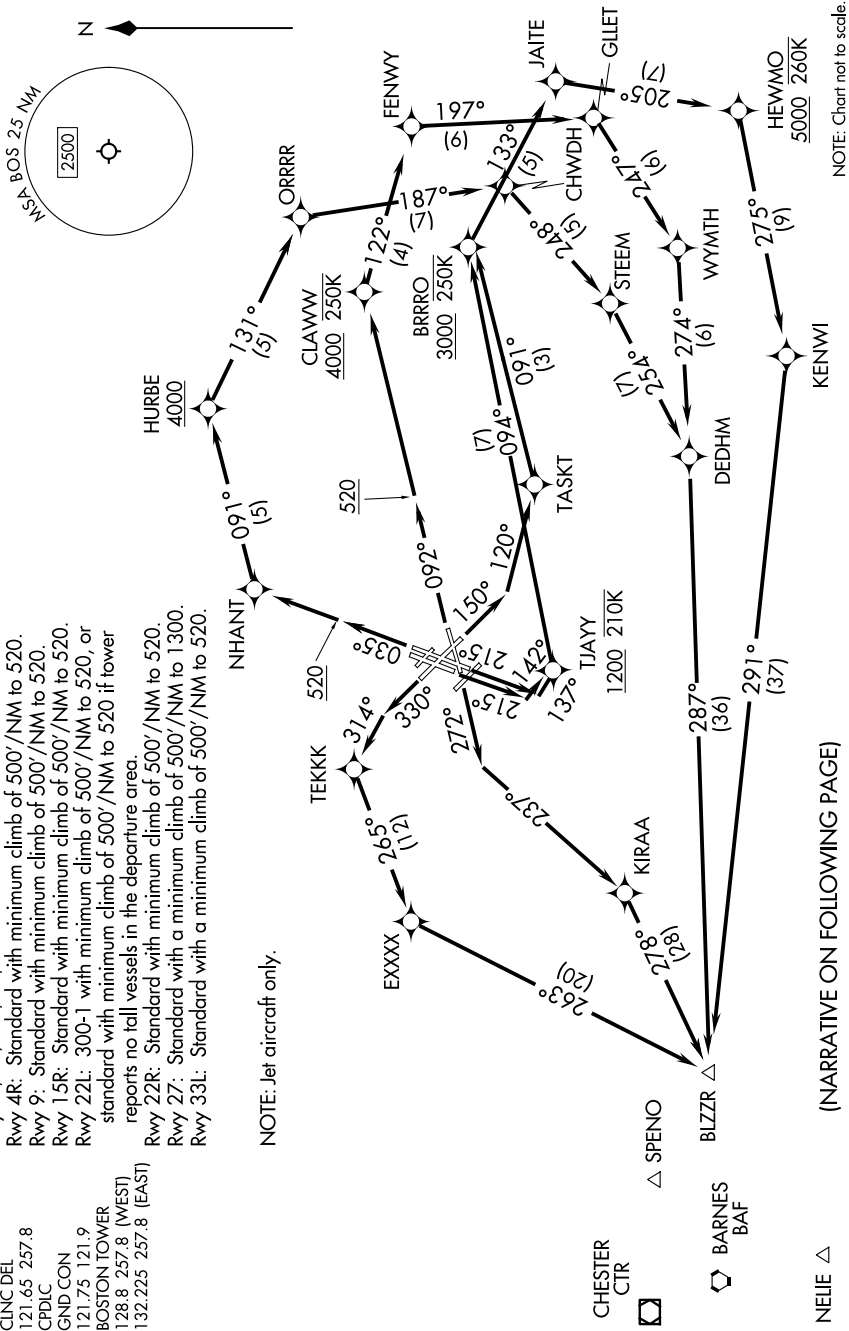
TAKEOFF MINIMUMS:

Rwy 4L, 14, 15L, 32, 33R: NA-ATC.
Rwy 4R: Standard with minimum climb of 500'/NM to 520.
Rwy 9: Standard with minimum climb of 500'/NM to 520.
Rwy 15R: Standard with minimum climb of 500'/NM to 520.
Rwy 22L: 300-1 with minimum climb of 500'/NM to 520, or standard with minimum climb of 500'/NM to 520 if tower reports no tall vessels in the departure area.
Rwy 22R: Standard with minimum climb of 500'/NM to 520.
Rwy 27: Standard with a minimum climb of 500'/NM to 1300.
Rwy 33L: Standard with a minimum climb of 500'/NM to 520.

NOTE: Jet aircraft only.

RNAV 1 - DME/DME/IRU or GPS.
RADAR required for non-GPS equipped aircraft.

TOP ALTITUDE: 5000



(NARRATIVE ON FOLLOWING PAGE)

NOTE: Chart not to scale.

NE-1, 16 APR 2026 to 14 MAY 2026

BLZZR SIX DEPARTURE (RNAV)