

HYLND SEVEN DEPARTURE (RNAV)

AL-58 (FAA)

BOSTON, MASSACHUSETTS

BOSTON DEP CON

133.0

D-ATIS 135.0

CLNC DEL

121.65 257.8

CPDLC

GND CON

121.75 121.9

BOSTON TOWER

128.8 257.8 (WEST)

132.225 257.8 (EAST)

RNAV 1 - DME/DME/IRU or GPS.

TOP ALTITUDE:

5000

RADAR required for non-GPS equipped aircraft.

TAKEOFF MINIMUMS:

Rwys 4L, 14, 15L, 32, 33R: NA-ATC.

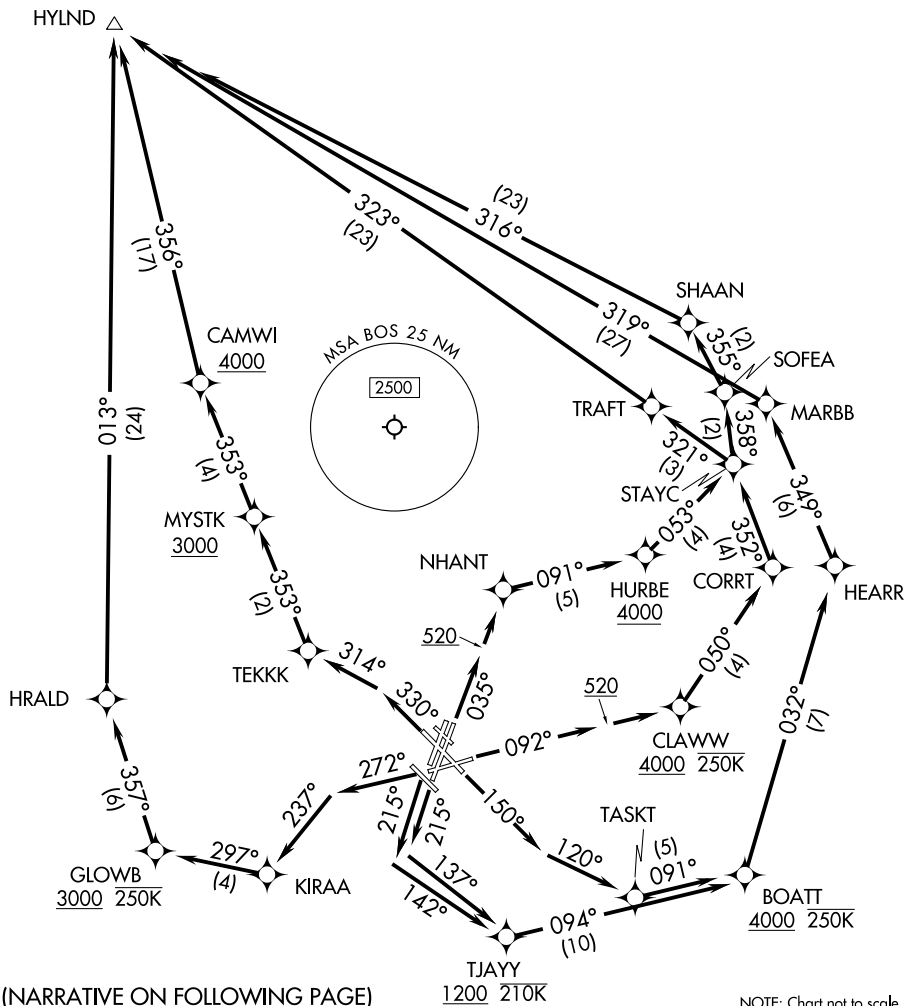
Rwys 4R, 9, 15R, 22R, 33L: Standard with minimum climb of 500'/NM to 520.

Rwy 22L: 300-1 with minimum climb of 500'/NM to 520, or standard with minimum climb of 500'/NM to 520 if tower reports no tall vessels in the departure area.

Rwy 27: Standard with minimum climb of 500'/NM to 1300.

△ MANCH

NOTE: Jet aircraft only.



(NARRATIVE ON FOLLOWING PAGE)

NOTE: Chart not to scale.

HYLND SEVEN DEPARTURE (RNAV)

BOSTON, MASSACHUSETTS

NE-1, 16 APR 2026 to 14 MAY 2026

NE-1, 16 APR 2026 to 14 MAY 2026