

REVSS SIX DEPARTURE (RNAV)

AL-58 (FAA)

BOSTON, MASSACHUSETTS

NE-1, 16 APR 2026 to 14 MAY 2026

TOP ALTITUDE: 5000

RNAV 1 - DME/DME/IRU or GPS.

RADAR required for non-GPS equipped aircraft.

TAKEOFF MINIMUMS

Rwy 4L, 14, 15L, 32, 33R: NA - ATC.

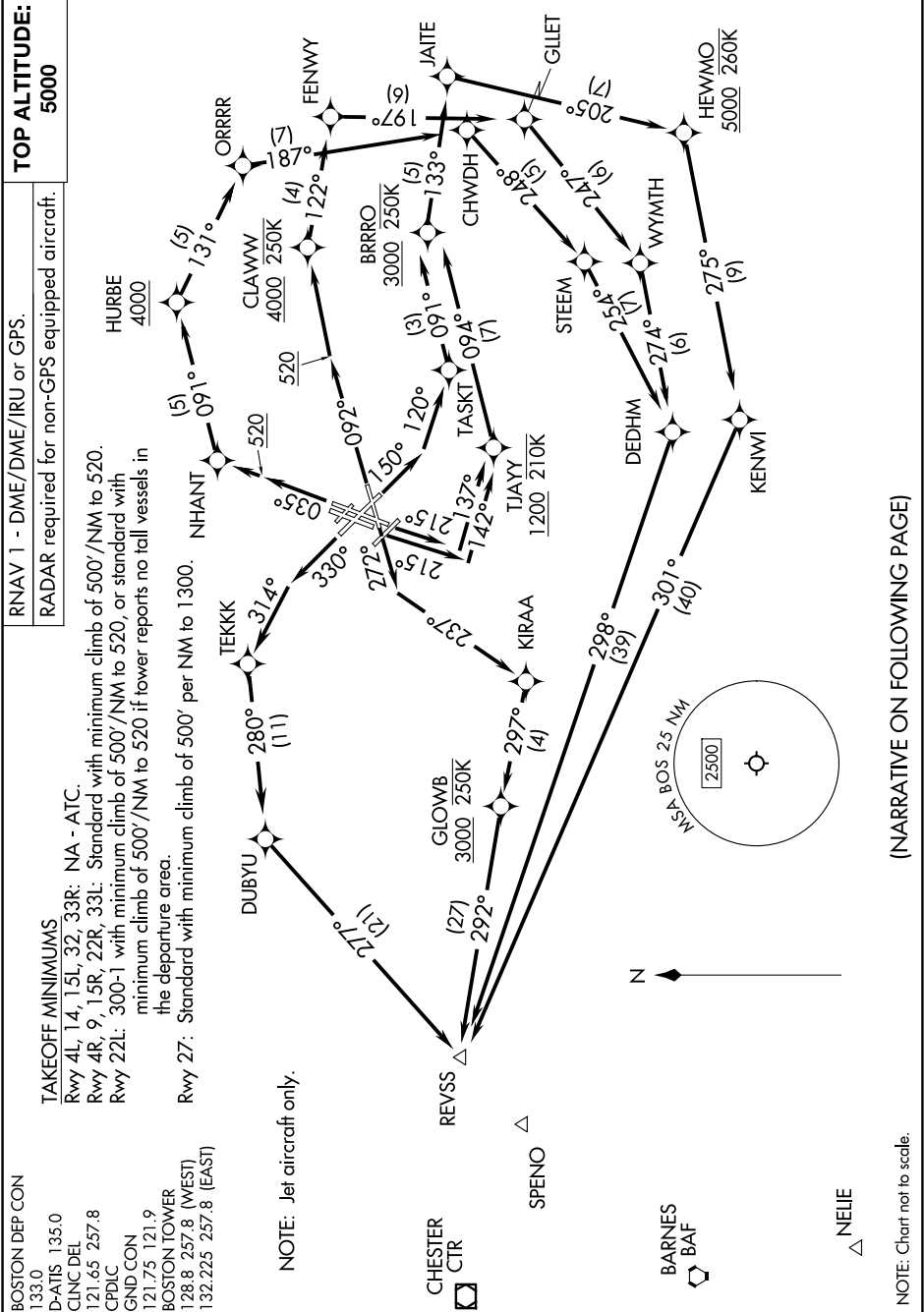
Rwy 4R, 9, 15R, 22R, 33L: Standard with minimum climb of 500'/NM to 520.

Rwy 22L: 300-1 with minimum climb of 500'/NM to 520, or standard with minimum climb of 500'/NM to 520 if tower reports no tall vessels in the departure area.

Rwy 27: Standard with minimum climb of 500' per NM to 1300.

BOSTON DEP CON
133.0
D-ATIS 135.0
CLNC DEL
121.65 257.8
CPDIC
GND CON
121.75 121.9
BOSTON TOWER
128.8 257.8 (WEST)
132.225 257.8 (EAST)

NOTE: Jet aircraft only.



(NARRATIVE ON FOLLOWING PAGE)

NE-1, 16 APR 2026 to 14 MAY 2026

REVSS SIX DEPARTURE (RNAV)

NOTE: Chart not to scale.