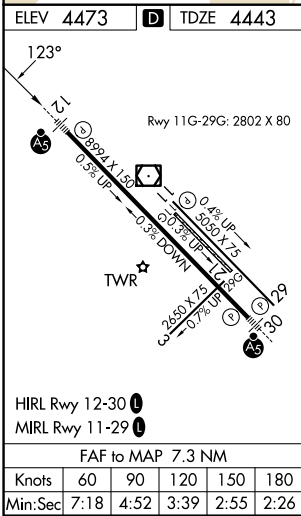
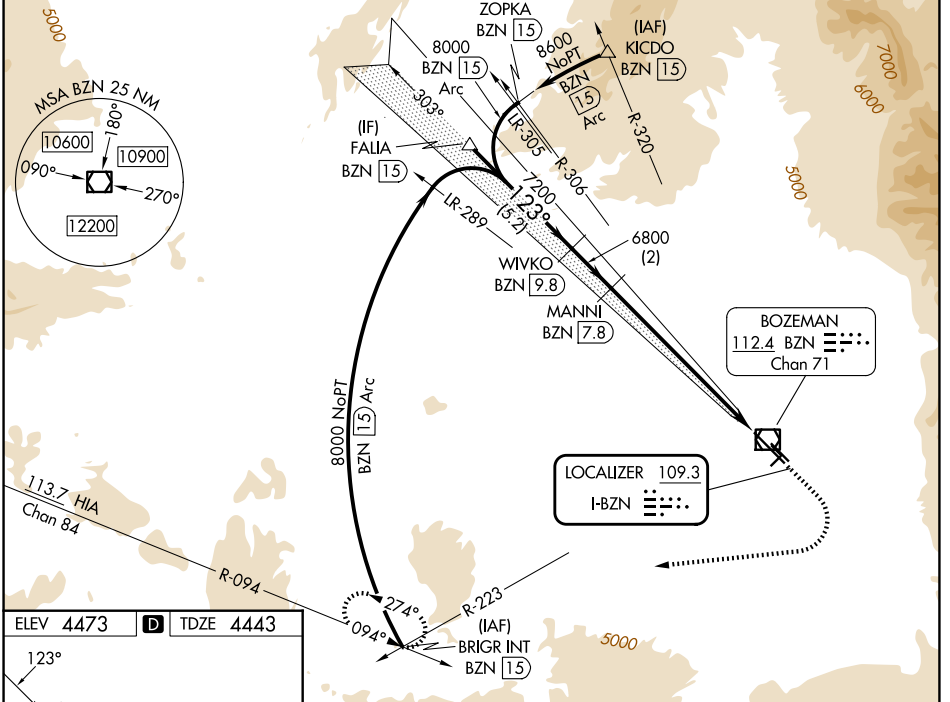


LOC I-BZN 109.3	APP CRS 123°	Rwy Ldg 8994 TDZE 4443 Apt Elev 4473
---------------------------	------------------------	---

ILS Z or LOC Z RWY 12

BOZEMAN YELLOWSTONE INTL (BZN)

DME required. RADAR required for procedure entry at BRIGR.		MALSR	MISSED APPROACH: Climb to 5200 then climbing right turn to 9000 on heading 250° on BZN VOR/DME R-223 to BRIGR/BZN 15 DME and hold, continue climb-in-hold to 9000.	
⚠ Circling NA to Rwy 3-21 and 11-29. DME from BZN VOR/DME. ⚠ DME use requires simultaneous reception of I-BZN and BZN DME. ❄ -21°C For inop ALS, increase S-LOC Cat C/D visibility to 2 SM. * RVR 1800 authorized with use of FD or AP or HUD to DA.				
ATIS 135.425	BIG SKY APP CON* 118.975 226.675	BOZEMAN TOWER* 118.2 (CTAF) 0	GND CON 121.8	UNICOM 122.95



ELEV 4473	TDZE 4443	5200		9000		BZN	BRIGR INT
Rwy 11G-29G: 2802 X 80		hdg 250°		R-223			
GS 3.00°		6800		BZN 2.6		BZN 0.5	
TCH 53		5.2 NM		2 NM		5.2 NM	
CATEGORY		A		B		C	
S-ILS 12*		4643/24		200 (200-1/2)			
S-LOC 12		5160/24		717 (700-1/2)		5160-1 5/8 717 (700-1 5/8)	
CIRCLING		5160-1		687 (700-1)		5160-2 687 (700-2) 5360-2 3/4 887 (900-2 3/4)	

NW-1, 16 APR 2026 to 14 MAY 2026

NW-1, 16 APR 2026 to 14 MAY 2026