

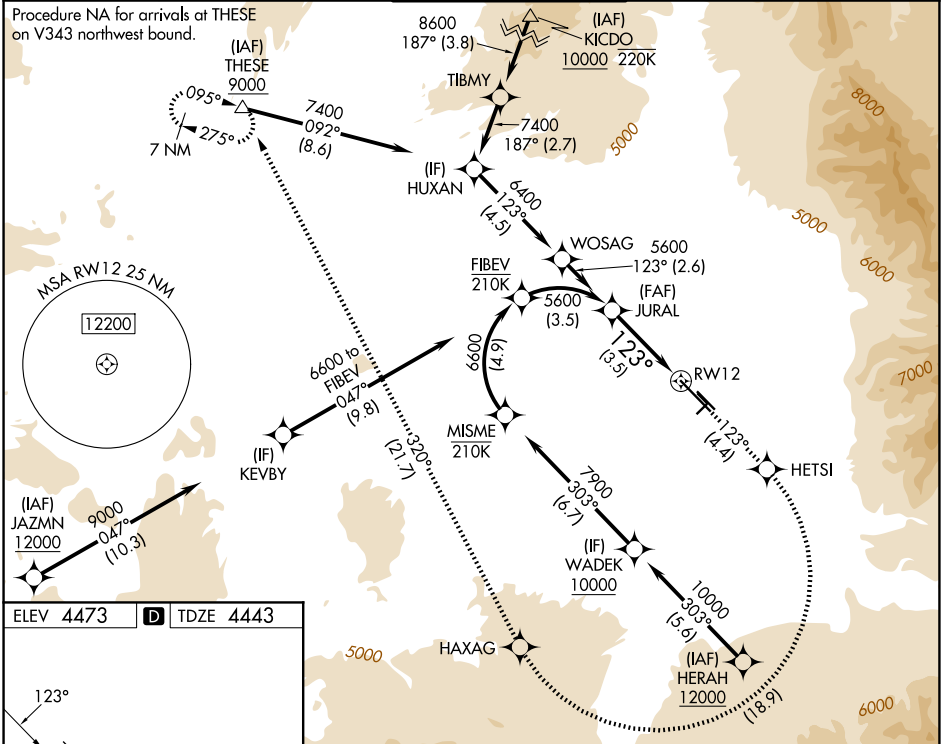
APP CRS	Rwy Ldg TDZE	8994
123°	Apt Elev	4443
		4473

RNAV (RNP) Z RWY 12

BOZEMAN YELLOWSTONE INTL (BZN)

RNP AR APCH - GPS, RF. Authorization required.		MALSR	MISSED APPROACH: Climb to 10000 on track 123° to HETSI, and right turn to HAXAG, and on track 320° to THESE and hold.
<p>▼ For uncompensated Baro-VNAV systems, procedure NA below -29°C or above 54°C. When local altimeter setting not received, procedure NA.</p> <p>☼ -21°C For inop ALS, increase RNP 0.10 all Cats visibility to 7/8 SM and increase RNP 0.30 all Cats visibility to 1 SM.</p>			

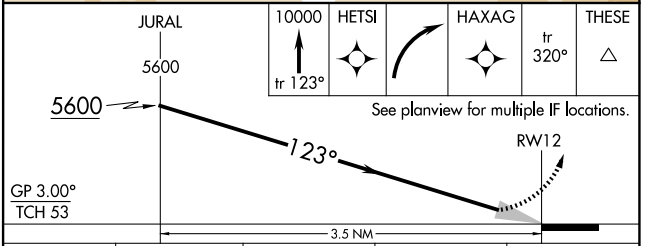
ATIS 135.425	BIG SKY APP CON * 118.975 226.675	BOZEMAN TOWER * 118.2 (CTAF) 0	GND CON 121.8	UNICOM 122.95
------------------------	---	--	-------------------------	-------------------------



ELEV 4473 **D** TDZE 4443

Rwy 11G-29G: 2802 X 80

HIRL Rwy 12-30 **0**
MIRL Rwy 11-29 **0**



GP 3.00° TCH 53	A	B	C	D
CATEGORY	A	B	C	D
RNP 0.10 DA		4725/24	282 (300-1/2)	
RNP 0.30 DA		4807/35	364 (400-5/8)	

AUTHORIZATION REQUIRED

NW-1, 16 APR 2026 to 14 MAY 2026

NW-1, 16 APR 2026 to 14 MAY 2026