

APP CRS <b>303°</b>	Rwy Ldg TDZE Apt Elev	<b>8994</b> <b>4462</b> <b>4473</b>
------------------------	-----------------------------	---

# RNAV (RNP) Z RWY 30

## BOZEMAN YELLOWSTONE INTL (BZN)

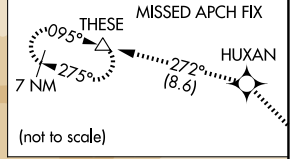
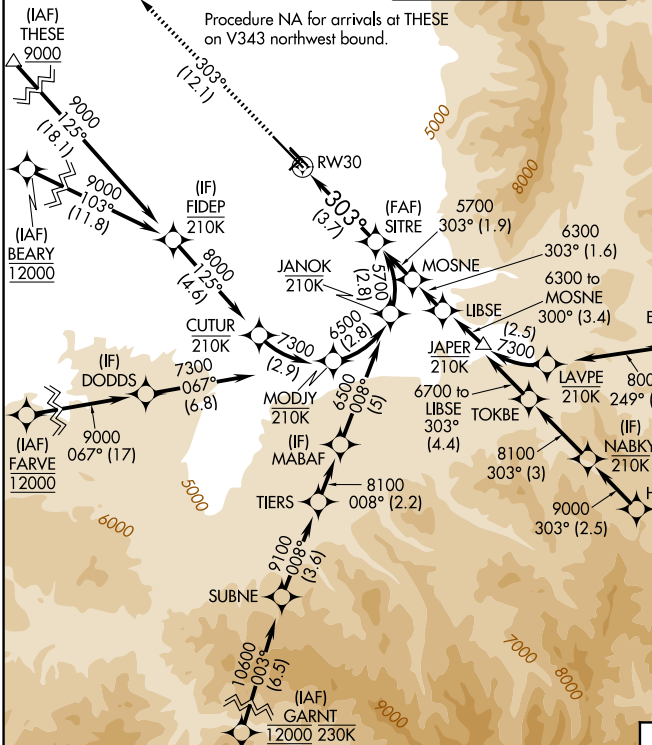
RNP AR APCH - GPS.

**⚠** For uncompensated Baro-VNAV systems, procedure NA below -27°C or -21°C above 54°C. When local altimeter setting not received, procedure NA.

MALSR **AS**

MISSED APPROACH: Climb to 10000 on track 303° to HUXAN and on track 272° to THESE and hold, continue climb-in-hold to 10000.

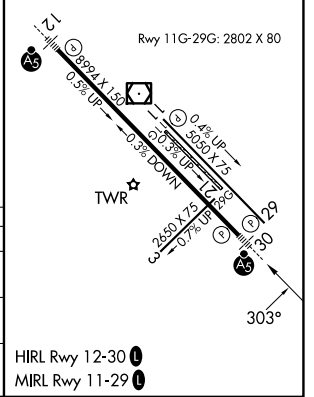
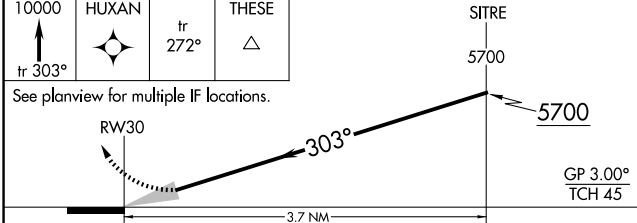
ATIS <b>135.425</b>	BIG SKY APP CON* <b>118.975 226.675</b>	BOZEMAN TOWER* <b>118.2 (CTAF) 0</b>	GND CON <b>121.8</b>	UNICOM <b>122.95</b>
------------------------	--	---	-------------------------	-------------------------



NW-1, 16 APR 2026 to 14 MAY 2026

NW-1, 16 APR 2026 to 14 MAY 2026

ELEV **4473** **D** TDZE **4462**



CATEGORY	A	B	C	D
RNP 0.11 DA		4806-1	344 (400-1)	
RNP 0.30 DA		4885-1¼	423 (500-1¼)	

**AUTHORIZATION REQUIRED**

HIRL Rwy 12-30 **0**

MIRL Rwy 11-29 **0**